



TABLE OF CONTENTS

Emergency Medical Procedures	2
Telephone Information	3
Student Organizations	4
Regents and UMD Administrators	6
Organizational Chart	7
Academic Calendar	8
Building Abbreviations and Addresses	9
Map of Campus	10
Offices and Departments	12
Faculty Emeritus	44

CAMPUS MEDICAL PROCEDURES

Campus Police 7000

Health Services 8155

Call 911 When:

- UMD Health Services is not open:
 - after 4 p.m. to 8 a.m. M-F (during academic semesters)
 - after 3 p.m. to 9 a.m. M-F in summer
 - on holidays, weekends.
- Victim is unconscious and not breathing.
- Victim is bleeding profusely and uncontrollably.
- CPR is necessary on site.

Arrange to do the following:

- Call Health Services after the ambulance is called.
- Post someone in the hallway to guide ambulance crew.
- Keep calm and keep the victim lying down.

NOTE: Campus police are trained first responders in medical emergencies and can be reached by calling 7000 during business hours (8 a.m.- 4:30 p.m. weekdays) and after hours by calling 911.

Police - Fire - Ambulance Emergency - Call 911

Note: Please stay on the phone until told to hang up.

Call 8155 (Health Services) when:

- Health Services is open:
 - from 8 a.m. to 4 p.m. M-F (during academic semesters)
 - from 9 a.m. to 3 p.m. M-F in summer
- Victim is conscious.
- Bleeding is controllable.
- Victim has fainted or had a seizure.
- Victim is unconscious but still breathing.

Arrange to do the following:

- Post someone in hallway to guide responders.
- Use common sense first aid procedures.
- Keep calm and keep victim lying down.

Call after hours, on holidays or on weekends:

St. Mary's/Duluth Clinic Urgent Care:

786-6000

St. Luke's Urgent Care:

249-6095

St. Luke's Hospital - Emergency

249-5616

St. Mary's Hospital - Emergency

786-4357

TELEPHONE INFORMATION

EMERGENCY CALLS

Campus Police (8 am - 4:30 pm M - F) 726-7000
After Hours: emergency and non-emergency 911
University Directory Operator 0
Plant operations/ maintenance problems (after hours) 726-8262
Non-Emergency Calls After Hours 726-8147

UMD TELEPHONE SERVICE

University Directory Operator 0

University Telephones (from off campus)

Duluth campus (218) 726-8000
Minneapolis and St. Paul campuses (612) 625-5000

Calls from Duluth Campus

To UMD campus numbers — dial four-digit extension
To Duluth city numbers—dial 9, then number listed

Person to Person

Dial 9 + 0 then area code and number. When operator answers, give the name of the person you are calling.

Collect

Dial 9 + 0 then area code and number. When operator answers, say "collect call" and give your name.

Toll Free Calls

Dial 9 + 1 then 800 and the rest of the number.

For TTY/TDD users, individuals or departments

1-800-627-3529 Minnesota Relay Service
Dial 711 Nationwide Relay Shortcut

TTY/TDD Pay Telephone Locations

Kirby Student Center, Library, Lake Superior Hall Lobby,
Darland Administration Building

Departments with TTY/TDD phones

UMD Human Resources. TTY 726-8251
UMD Office of Equal Opportunity TTY 726-6115
Speech and Hearing Clinic TTY 726-6890
Disability Services and Resources TTY 726-7380
Sign Language Interpreters TTY 726-6575

FREQUENTLY CALLED CAMPUS NUMBERS

Athletic Ticket Office 726-8595
Auxiliary Services 726-7175
Career Services 726-7985
Computer Corner 726-6218
Credit Union 726-6310
Environmental Health and Safety 726-7139
Financial Aid 726-8000
Health Services 726-8155
Housing Office 726-7381, 726-8178
Kirby Game Room 726-8734
Kirby Information Desk 726-7163
Kirby Program Board 726-7162
KUMD 726-7181
Library 726-6120, 726-8102
LSH Information Desk 726-7381
Mailroom 726-8287
Maintenance 726-8400
MPAC Box Office 726-8561
Print Shop 726-7114
Recreational Sports and Outdoor Program 726-7128
Solon Campus Center Information 726-8850
Statesman 726-7112
Technology Systems and Services 726-7587

Tutoring Center 726-6248
Tweed Museum of Art 726-8222
UMD Stores (Upper Level) 726-8520
UMD Stores (Lower Level/Bookstore) 726-7286

ESCORT SERVICE

"UMD Safewalk" Escort 726-6100

MISCELLANEOUS

Charter Communications (Cable TV) 1-800-581-0081
DECC Ticket Office 727-4344
Duluth Public Library 723-3800
Duluth News Tribune 723-5281
Glensheen 726-8910
Skyline Bowling Lanes 727-8555

MOVIES

Twin Ports Movie Hotline 729-0335
Omnimax 727-0022

PIZZA

Bulldog Pizza 728-3663
Domino's (Woodland) 728-3627
Pizza Hut (London Rd) 724-8875
Pizza Luce 727-7400
Sammy's Pizza 727-8551
Taste of Italia 726-7867
Vintage Italian Pizza 728-4411

RESTAURANTS

Amazing Grace 723-0075
BAJA Billy's Cantina & Grill 727-4921
Bellisio's 727-4921
Beaner's Central Inc 624-5957
Bennett's On The Lake 722-2829
Brewhouse Brewery & Grille 726-1392
Browser's NETc Cafe 726-0530
Black Woods Grill & Bar 724-1612
Caribou Coffee (Central Entrance) 720-4675
Chester Creek Cafe 724-3677
Duluth Athletic Club 720-4445
Erbert & Gerbert's

UMD Student Organizations

For details and current contact information on these and other student organizations
visit <http://www.d.umn.edu/~student/stuorg/list.cgi>

Student Activities Center — 115 Kirby Student Center — 726-7169

E-mail and phone information was provided as of September 19, 2005.

Student Service Fee Supported Organizations

Access For All	726-8217
270D KSC.	access-4-all@d.umn.edu
Anishinabe Student Organization	726-8141
118 Cina	anish.stu.org@d.umn.edu
Asian-Pacific American Association	726-6335
270J KSC.	vang0589@d.umn.edu
Black Student Association	726-8115
270H KSC.	africana-ssd@d.umn.edu
International Club	726-8738
270F KSC	intlclub@d.umn.edu
Kirby Program Board	726-7162
120 KSC	kpboard@d.umn.edu
Latino & Chicana Student Association	726-8444
270G KSC.	latino-ssd@d.umn.edu
Queer Student Union	726-7076
270E KSC	qsu@d.umn.edu
Volunteer Experiences	726-6255
270A KSC.	serve@d.umn.edu
UMD Statesman	726-7112
118 KSC	statesman@d.umn.edu
UMD Student Association	726-7178
110 KSC.	umdsa@d.umn.edu

Professional, Department and Honorary

Accounting Club	koep0050@d.umn.edu
Advertising and Marketing (ADMAR) Club . . .	hart0596@d.umn.edu
Alpha Mu Gamma	ihellie@d.umn.edu
American Society of Safety Engineers	hfonooni@d.umn.edu
Anthropology Club	mart1157@d.umn.edu
Association for Computing Machinery	shar0213@d.umn.edu
Biology Club	foss0196@d.umn.edu
Chemistry & Biochemistry Club	ihea0003@d.umn.edu
Communication Sciences & Disorders Club . .	meg10004@d.umn.edu
Der Deutsche Kultur Club.	brei0086@d.umn.edu
Economics Club	hoch0057@d.umn.edu
Eta Sigma Gamma	wood0552@d.umn.edu
Geology Club	brew0077@d.umn.edu
GURSES-Geography, Urban Reg. Stud., Enviornm. Science	ande3369@d.umn.edu
History Club	will1641@d.umn.edu
International Association of Jazz Education . . .	poll0135@d.umn.edu
Investment Club	ethi0009@d.umn.edu
Kappa Psi Pharmaceutical Fraternity	vang0594@d.umn.edu

Mechanical & Industrial Engineering Club	engl0142@d.umn.edu
Medical Education through Diversity & Science.	hoody001@d.umn.edu
Minnesota Pharmacy Student Alliance . .	eric1095@umn.edu
Minnesota Society of Professional Engineers	maso0136@d.umn.edu
Mock Trial/Pre-Law Society	cope0053@d.umn.edu
Multicultural Pharmacy Student Association	neng0001@d.umn.edu
Omega Chi Epsilon	rdavis@d.umn.edu
PharmD Organization	kriess@umn.edu
Physics Club	east0108@d.umn.edu
Pi Sigma Epsilon	mcde0056@d.umn.edu
Pre-Medicine Club	scha0868@d.umn.edu
Pre-Pharmacy Club	siev0046@d.umn.edu
Pre-Veterinary Club	fese0006@d.umn.edu
Psychology Club	edma0015@d.umn.edu
Society for Human Resource Management	trin0059@d.umn.edu
Students 4 Success.	rand0193@d.umn.edu
U.S. Institute of Theatre Technology . . .	wern0134@d.umn.edu
University Singers	olso1777@d.umn.edu
Women in Engineering & Science	ekho0008@d.umn.edu

Greek Life

Gamma Sigma Sigma	anka0003@d.umn.edu
Alpha Nu Gamma	zulu0002@d.umn.edu
Alpha Phi Omega	godf0033@d.umn.edu
Beta Lambda Psi	ekst0035@d.umn.edu
Greek Life	gora@umn.edu
Phi Kappa Psi	lipa0003@umn.edu
Phi Sigma Sigma	king0415@d.umn.edu
Tau Kappa Epsilon	hodg0113@d.umn.edu

Political and Social Action

Amnesty International.	aram0006@d.umn.edu
College Democrats.	bjer0104@d.umn.edu
College Republicans.	wils0722@d.umn.edu
MPIRG: MN Public Interest Research Group	mcke0215@d.umn.edu

Religious

Campus Crusade For Christ marl0038@d.umn.edu
 Chi Alpha Students For Christ chialpha@d.umn.edu
 InterVarsity Christian Fellowship ivcf@d.umn.edu
 Jewish Student Organization prem0017@d.umn.edu
 Lutheran Campus Ministry elli0439@d.umn.edu
 Muslim Student Association umdmsa@yahoo.com
 The Navigators gcrowley@campusnavs.org
 Newman Catholic Campus Ministry LeahJacobson@catholic.org
 Vineyard Student Organization college@duluthvineyard.org

Recreational and Special Interest

Alpine Ski Club berg1373@d.umn.edu
 Anime Club rowa0036@d.umn.edu
 Arabic Language and Culture Club rstanfie@d.umn.edu
 Arnold Air Society chur0085@d.umn.edu
 Attitudes Dance Association adel0023@d.umn.edu
 Bad Ideas Club phil0309@d.umn.edu
 Chinese Scholars & Students Association
 gaox0063@d.umn.edu
 Cigar Club nied0043@d.umn.edu
 Collegians for a Constructive Tomorrow wils0722@d.umn.edu
 Curling Club zbyl0001@d.umn.edu
 Dance Team lutz0051@d.umn.edu
 Democracy Matters tess0048@d.umn.edu
 Dodge Ball Etc. kerc0003@d.umn.edu
 Duluth Womens Ultimate (Lake Effect) herm0215@d.umn.edu
 FACE- Feminists Advocating Change simo0341@d.umn.edu
 Fencing Club dibx0003@d.umn.edu
 Football & Basketball Cheerleading homm0032@d.umn.edu
 Future Entrepreneurs of America keim0017@d.umn.edu
 Hiki-No Self-Defense Club espe0043@d.umn.edu
 Hockey Cheerleading krzm0015@d.umn.edu
 Hockey Club (Men) corn0140@d.umn.edu
 Hockey Club (Women) cour0077@d.umn.edu
 Lacrosse Club (Women) schi0453@d.umn.edu
 Literary Guild litguild@d.umn.edu
 MAC User Group jans0158@d.umn.edu
 Nordic Ski Club krok0004@d.umn.edu
 North Shore Climbers vill0129@d.umn.edu
 Northern Lights Ultimate Frisbee (Men) jans0158@d.umn.edu
 Peer Health Educators sdecaign@d.umn.edu
 Pep Band knau0029@d.umn.edu
 Photo Alliance UMDPA@d.umn.edu
 Pro Choice duep0004@d.umn.edu
 Rotaract ross0368@d.umn.edu
 Rugby Club (Men) duluthmensrugby@d.umn.edu

Rugby Club (Women) dwrugbyoff@d.umn.edu
 Scholar's Club bern0321@d.umn.edu
 Snowboard Club lene0013@d.umn.edu
 Soccer Club (Men) sode0098@d.umn.edu
 Socratic Society cope0053@d.umn.edu
 Student Design Organization rode0076@d.umn.edu
 Student Health Advisory Committee sdecaign@d.umn.edu
 Student Legislative Coalition hoff0631@d.umn.edu
 Students for a Free Tibet groo0018@d.umn.edu
 Survivors wils0722@d.umn.edu
 Tennis Team (Women) stan0352@d.umn.edu
 University Gaming Society meis0062@d.umn.edu
 Up 'Til Dawn lenz0095@d.umn.edu
 Witness for Peace beck0598@d.umn.edu
 Women's Resource Action Center swoodwar@d.umn.edu
 Wuda Wooch topi0007@d.umn.edu
 Young Voters Project tess0048@d.umn.edu

REGENTS AND UMD ADMINISTRATORS

BOARD OF REGENTS

Anthony Baraga, Chair, Side Lake
Patricia Simmons, Vice Chair, Rochester
Clyde Allen Jr., Moorhead
Peter Bell, St. Paul
Frank R. Berman, Edina
Dallas Bohnsack, New Prague
John Frobenius, St. Cloud
Steven Hunter, Woodbury
David Larson, Wayzata
Richard F. McNamara, Minneapolis
David Metzen, South St. Paul
Lakeesha Ransom, Minneapolis

UNIVERSITY ADMINISTRATIVE OFFICERS

Robert Bruininks, President
E. Thomas Sullivan, Senior Vice President for
Academic Affairs and Provost
Frank B. Cerra, Senior Vice President for Health Sciences
Robert Jones, Senior Vice President for System Administration
Kathryn F. Brown, Vice President and Chief of Staff
Charles Muscoplat, Vice President for Agricultural Policy
Carol Carrier, Vice President for Human Resources
Linda L. Thrane, Vice President for University Relations
R. Timothy Mulcahy, Vice President for Research
Kathleen O'Brien, Vice President for University Services
Richard Pfutzenreuter, Vice President and Chief Financial Officer
Mark B. Rotenberg, General Counsel
Alfred D. Sullivan, Executive Associate Vice President

DULUTH CAMPUS ADMINISTRATIVE OFFICER

Kathryn A. Martin, Chancellor, 515 DAdB

VICE CHANCELLORS

Gregory R. Fox, Vice Chancellor for Finance and
Operations, 500 DAdB
Bruce L. Gildseth, Vice Chancellor for Academic Support
and Student Life, 297 DAdB
Vincent Magnuson, Vice Chancellor for Academic
Administration, 420 DAdB
William Wade, Vice Chancellor for University
Relations, 315 DAdB

DEANS

Jack Bowman, Dean, School of Fine Arts, 212 H
Paul Deputy, Dean, College of Education and
Human Service Professions, 125 BohH
Linda Krug, Dean, College of Liberal Arts, 306 KPlz
Kjell Knudsen, Dean, Labovitz School of Business
and Economics, 104 SBE
James P. Riehl, Dean, College of Science and
Engineering, 140 EngrB
Richard Ziegler, Dean, School of Medicine, 117 Med

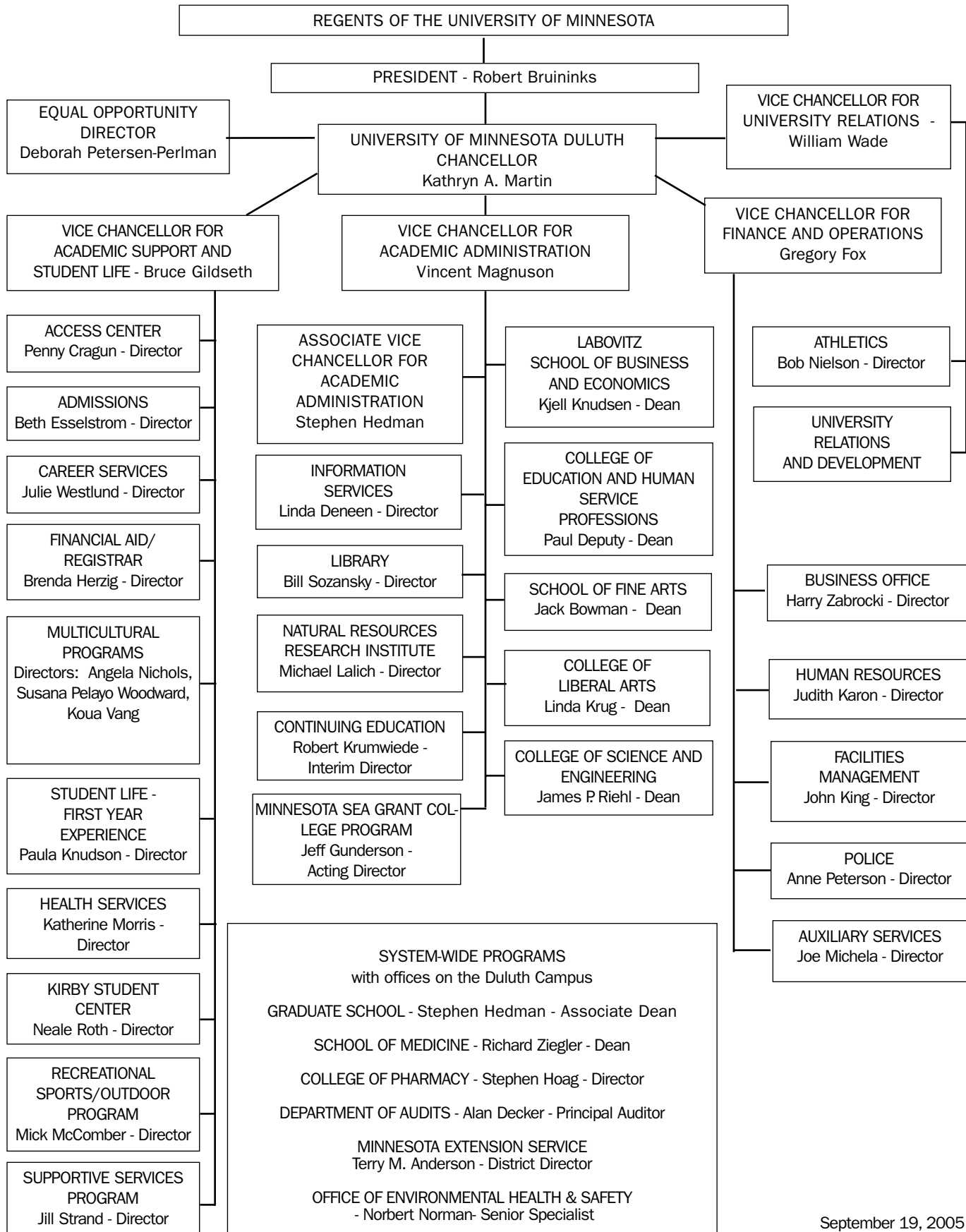
ASSOCIATE AND ASSISTANT VICE CHANCELLORS

Stephen C. Hedman, Associate Vice Chancellor for
Academic Administration, 420 DAdB
Associate Dean, Graduate School, 431 DAdB
Robert Krumwiede, Assistant Vice Chancellor for
Academic Administration, 420 DAdB
Eric Weldy, Associate Vice Chancellor for Academic Support and
Student Life, 297 DAdB

DIRECTORS

Ken Bloom, Director, Tweed Museum of Art, TMA
Penny Cragun, Director, Access Center, 241 KSC
Patricia DeLano, Alumni Director, 315 DAdB
Linda Deneen, Director, Information Services,
176 MWAH
Beth Esselstrom, Director, Admissions, 20 SCC
Brenda Herzig, Director, Financial Aid and Registrar, 21 SCC
John King, Director, Facilities Management, 241 DAdB
Judith Karon, Director, Human Resources, 255 DAdB
Paula Knudson, Student Life/First Year Experience Director,
60 SCC
Lucy Kragness, Executive Assistant to the Chancellor,
Chancellor's Office, 515 DAdB
Michael J. Lalich, Director, Natural Resources Research
Institute, 5013 Miller Trunk Highway, 55811
Susan Beasy Latto, Director, Public Relations, 315 DAdB
Mick McComber, Director, Recreational Sports
Outdoor Program, 121 SpHC
Joseph P. Michela, Director, Auxiliary Services, 270 KSC
Katherine Morris, Health Services Director, HS
Angela Nichols, Director, Multicultural Program, 245 KSC
Bob Nielson, Director, Intercollegiate Athletics,
170 SpHC
Deborah Petersen-Perlman, Director,
Equal Opportunity, 255 DAdB
Anne Peterson, Director, Campus Police, 287 DAdB
Cheryl Reitan, Publications Director, 315 DAdB
Neale L. Roth, Director, Kirby Student Center, KSC
Diane Skomars, Director of Development, 315 DAdB
Maryann Soleim, Associate Director, University Relations and
Development, 315 DAdB
Bill Sozansky, Director, Library, 248 L
Jill Strand, Supportive Services Program Director, 60 SCC
Koua Vang, Director, Multicultural Program, 235 KSC
Julie Westlund, Career Services Director, 21 SCC
Susana Pelayo Woodward, Director, Multicultural Program,
233 KSC
Harry F. Zabrocki, Director, Business Office, 205 DAdB

ORGANIZATIONAL CHART



2005 - 2006 ACADEMIC CALENDAR

FALL SEMESTER 2005 September 6 - December 22

August 29	Monday	Academic appointments begin
September 5	Monday	Holiday - campus closed
September 6	Tuesday	Fall semester classes begin
November 24	Thursday	Holiday - campus closed
November 26	Friday	Floating holiday - campus closed
December 16	Friday	Last day of fall semester classes
December 17 and 19-22	Saturday and Monday-Thursday	Final exams
December 23	Friday	Floating holiday - campus closed
December 26	Monday	Holiday - campus closed
December 27	Tuesday	Floating holiday - campus closed
January 2	Monday	Holiday - campus closed

SPRING SEMESTER 2006 January 17 - May 12

January 16	Monday	Holiday - campus closed
January 17	Tuesday	Spring semester classes begin
March 7	Tuesday	Caucus Night
March 10	Friday	Last day of classes before spring break
March 13-17	Monday-Friday	Spring break
March 20	Monday	Classes resume
May 5	Friday	Last day of spring semester classes
May 8-12	Monday-Friday	Final exams
May 11	Thursday	Graduate School commencement
May 13	Saturday	Commencement
May 28	Sunday	Academic appointments end
May 29	Monday	Holiday - campus closed

MAY SESSION 2006 May 15 - June 2

May 15	Monday	May session classes begin
May 29	Monday	Holiday - campus closed
June 2	Friday	Final exams; end of May session

SUMMER SESSION 2006 June 5 - July 28

June 5	Monday	Summer term classes begin
July 3	Monday	Floating holiday - campus closed
July 4	Tuesday	Holiday - campus closed
July 29	Friday	Final exams; end of summer term

BUILDING ABBREVIATIONS/ADDRESS LIST

Name	Bldg	Abbr.	ADDRESS
A. B. Anderson Hall	ABAH	1121	University Drive
Bagley Nature Area / Rock Hill	BNA	1325	Junction Ave.
Bohannon Hall	BohH	1207	Ordean Court
Burntside Hall	BH	1320	Maplewood Court
Chemistry	Chem	1039	University Drive
Cina Hall	CinaH	1123	University Drive
Darland Admin. Building	DAdB	1049	University Drive
Engineering	Engr	1303	Ordean Court
Glensheen	G	3300	London Road
Goldfine Hall A	GoldH	1205	Village Lane
Goldfine Hall B	GoldH	1215	Village Lane
Goldfine Hall C	GoldH	1225	Village Lane
Griggs Stadium	GrSt	1336	University Drive
Griggs Hall (A-D)	GH	509	Niagara Court
Griggs Hall (E-F)	GH	508	Niagara Court
Griggs Hall (K-N)	GH	1220	Maplewood Court
Griggs Hall (P-S)	GH	1224	Maplewood Court
Health Services	HS	615	Niagara Court
Heaney Hall	HHa	1220	Village Lane
Heaney Hall Service Center	HHSC	1315	Maplewood Court
Heller Hall	HH	1114	Kirby Drive
Humanities	H	1201	Ordean Court
Junction Apts. (Cuyuna)	JApts	1115	Junction Ave.
Junction Apts. (Mesabi)	JApts	1135	Junction Ave.
Kirby Plaza	KPlz	1208	Kirby Drive
Kirby Student Center	KSC	1120	Kirby Drive
Lake Superior Hall	LSH	513	Niagara Court
Library	L	416	Library Drive
Library Annex	LAnnx	1314	Kirby Drive
Life Science	LSci	1110	Kirby Drive
Limnology	Lim	6008	London Road
Marshall Performing Arts Ctr.	MPAC	1215	Ordean Court
Marshall W. Alworth Hall	MWAH	1023	University Drive
M.W. Alworth Planetarium	MWAP	1023	University Drive
Montague Hall	MonH	1211	Ordean Court
Natural Resources Research Institute	NRRI	5013	Miller Trunk Hwy
Oakland Apts. (Aspen)	OApts	616	Oakland Circle
Oakland Apts. (Balsam)	OApts	623	Oakland Circle
Oakland Apts. (Basswood)	OApts	621	Oakland Circle
Oakland Apartments (Birch)	OApts	619	Oakland Circle
Oakland Apartments (Oak)	OApts	618	Oakland Circle
Research and Field Stud. Ctr.	RFSC	4907	Jean Duluth Road
Research Laboratory Building	RLB	2205	E. 5th Street
Residence Dining Center	RDC	1120	Kirby Drive
School of Bus. and Econ.	SBE	412	Library Drive
School of Medicine	SMed	1035	University Drive
Solon Campus Center	SCC	1117	University Drive
Sports and Health Center	SpHC	1216	Ordean Court
St. Louis Bay Aquatic Center	SLBAC	1421	St. Louis Ave.
Stadium Apartments (A-D)	SApts	1630	University Drive
Stadium Apartments (E-H)	SApts	1530	University Drive
Stadium Apartments (J-M)	SApts	1430	University Drive
Swenson Science Building	SSB	1035	Kirby Drive
Tweed Museum of Art	TMA	1201	Ordean Court
Vermilion Hall	VH	1105	Kirby Drive
Voss Kovach Hall	VKH	1305	Ordean Court
Ward Wells Field House	WWFH	1228	University Drive
Washburn Hall	WH	2305	E. 5th Street
WDSE TV	WDSE	632	Niagara Court
Weber Music Hall	WMH	1151	University Drive

About Building Address and Signs on Campus

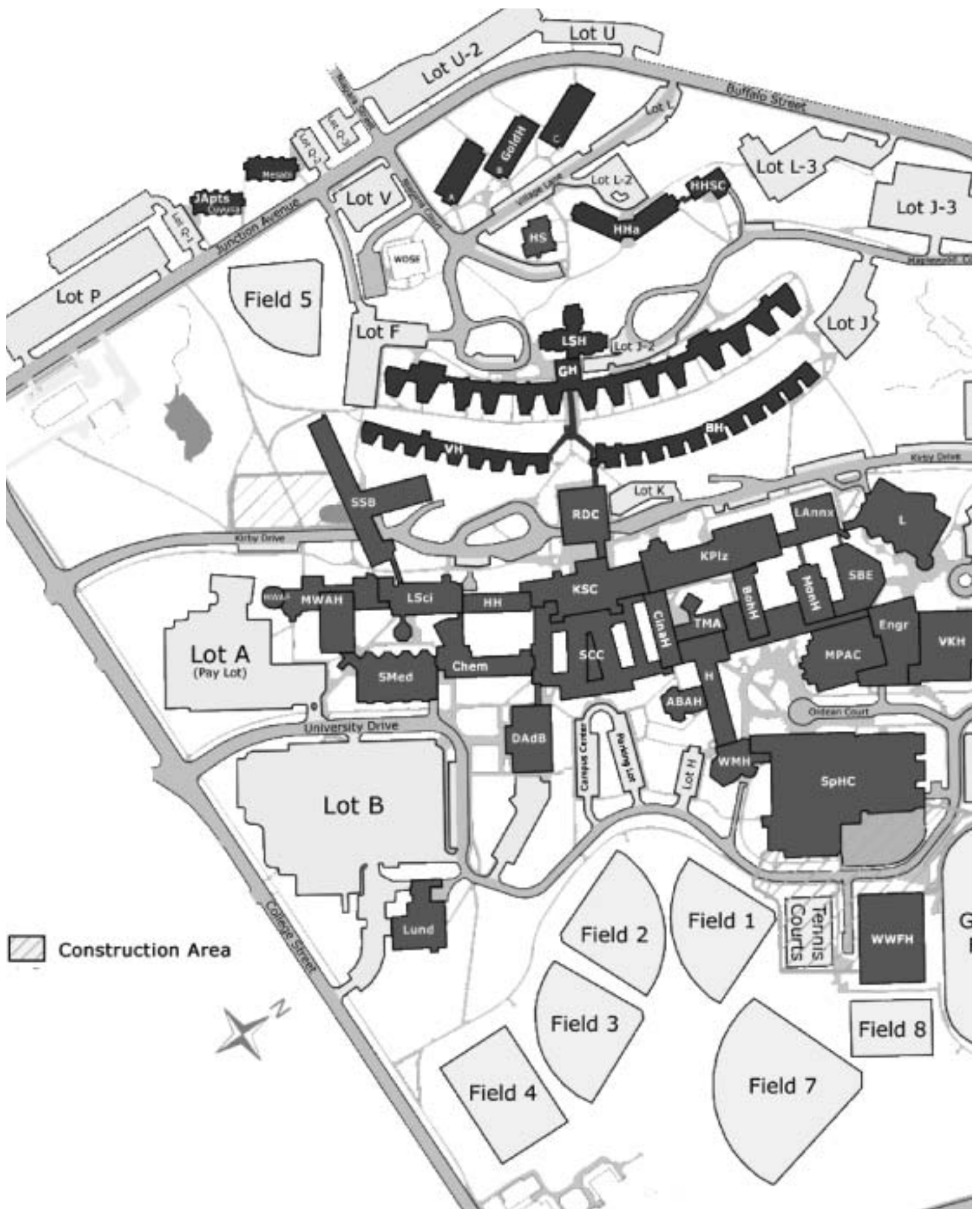
These address help UMD work with the St. Louis County's 911 Emergency Communications Department and the Duluth Fire Department to create a safe, easily navigated campus.

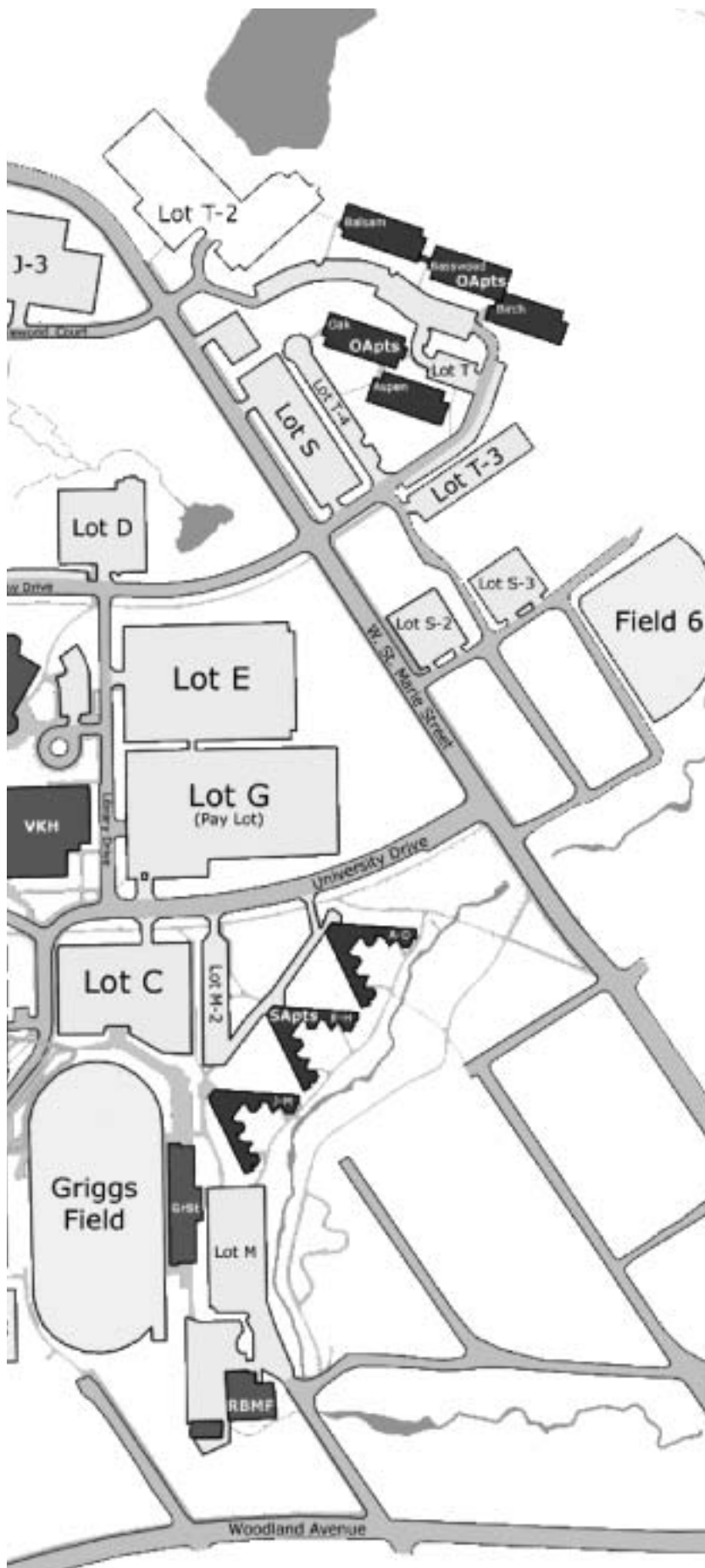
All campus buildings, parking lots, and sports fields have specific addresses.

For additional information (frequently asked questions, building address list, address map, sample signs, and sample addresses) please visit <http://www.d.umn.edu/fm/services/mail/faq.html>

This site is especially helpful to check building addresses for mailing purposes.

If you have any questions which are not answered on this website, contact the project manager, Erik Larson, in Facilities Management at 726-6915 or elarson@d.umn.edu.





**MAP LEGEND
and Building Abbreviations**

Blg Abrv.	Name
ABAH	A. B. Anderson Hall
BohH	Bohannon Hall
BH	Burntside Hall
Chem	Chemistry
CinaH	Cina Hall
DAdB	Darland Admin. Building
Engr	Engineering
G	Glensheen
GoldH	Goldfine Hall
GrSt	Griggs Stadium
GH	Griggs Hall
HS	Health Services
HHa	Heaney Hall
HHSC	Heaney Hall Service Center
HH	Heller Hall
H	Humanities
JApts	Junction Apts.
KPlz	Kirby Plaza
KSC	Kirby Student Center
LSH	Lake Superior Hall
L	Library
LAnnx	Library Annex
LSci	Life Science
MPAC	Marshall Performing Arts Ctr.
MWAH	Marshall W. Alworth Hall
MWAP	M. W. Alworth Planetarium
MonH	Montague Hall
OApts	Oakland Apts.
RDC	Residence Dining Center
SBE	School of Bus. and Econ.
SMed	School of Medicine
SCC	Solon Campus Center
SpHC	Sports and Health Center
SApts	Stadium Apartments
SSB	Swenson Science Building
TMA	Tweed Museum of Art
VH	Vermilion Hall
VKH	Voss Kovach Hall
WWFH	Ward Wells Field House
WH	Washburn Hall
WDSE	WDSE TV
WMH	Weber Music Hall