

# ITS INFORMATION TECHNOLOGY SYSTEMS & SERVICES

## Installing Lab Black & White Printers for Mac OS X

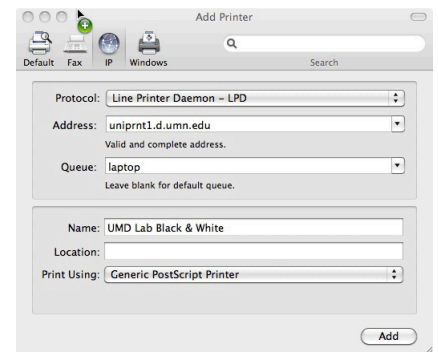
1. Begin by opening System Preferences. Go up to the Apple in the upper left corner of your display and go down until you find “System Preferences.” This will launch the System Preferences window, once in System Preferences, open the “Print & Fax” pane.



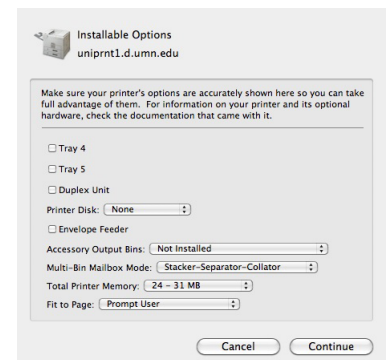
2. In the Print & Fax pane click the “+” button to add a new printer.
3. A new window will appear... Populate the fields listed below with the appropriate information

Protocol: Line Printer Daemon - LPD  
Address: uniprnt1.d.umn.edu  
Queue: laptop  
Name: UMD Lab Black & White  
Location: (Optional)

4. In that same window in the “Print Using” field, open the drop down menu and choose “Select Printer Software...” In the new window search for HP LaserJet 8150 series, and click Ok.
5. After choosing the correct driver, click the “Add” button.
6. In the small window that appears, do not change any of the default settings, just simply click the Continue button



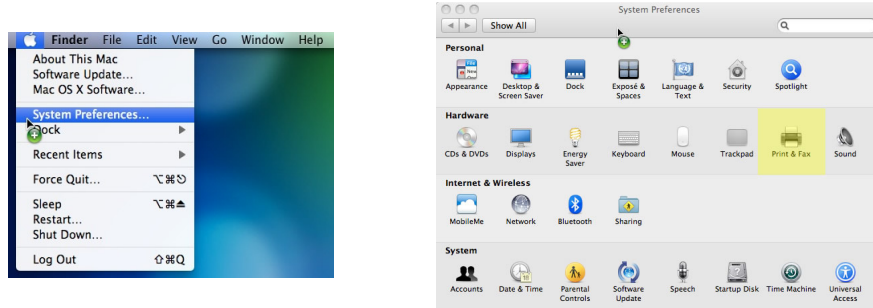
7. The printer should now appear in the Print & Fax pane in your System Preferences window



# ITS INFORMATION TECHNOLOGY SYSTEMS & SERVICES

## Installing Lab Color Printers for Mac OS X

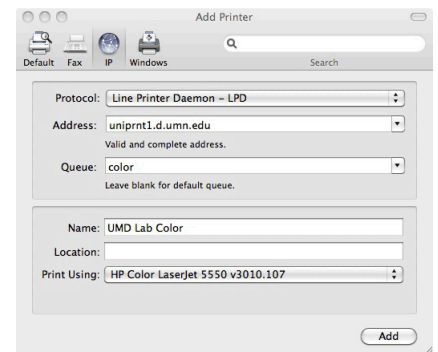
1. Begin by opening System Preferences. Go up to the Apple in the upper left corner of your display and go down until you find “System Preferences.” This will launch the System Preferences window, once in System Preferences, open the “Print & Fax” pane.



2. In the Print & Fax pane click the “+” button to add a new printer.
3. A new window will appear... Populate the fields listed below with the appropriate information

Protocol: Line Printer Daemon - LPD  
Address: uniprnt1.d.umn.edu  
Queue: color  
Name: UMD Lab Color  
Location: (Optional)

4. In that same window in the “Print Using” field, open the drop down menu and choose “Select Printer Software...” In the new window search for HP Color LaserJet 5550 series, and click Ok.
5. After choosing the correct driver, click the “Add” button.
6. In the small window that appears, do not change any of the default settings, just simply click the Continue button



7. The printer should now appear in the Print & Fax pane in your System Preferences window

