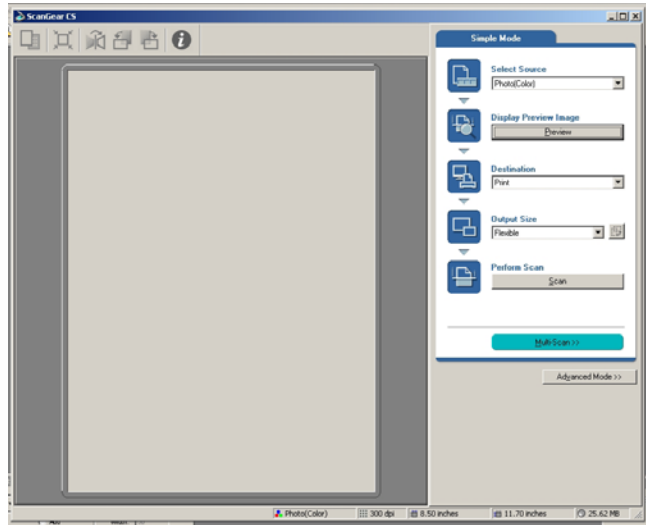
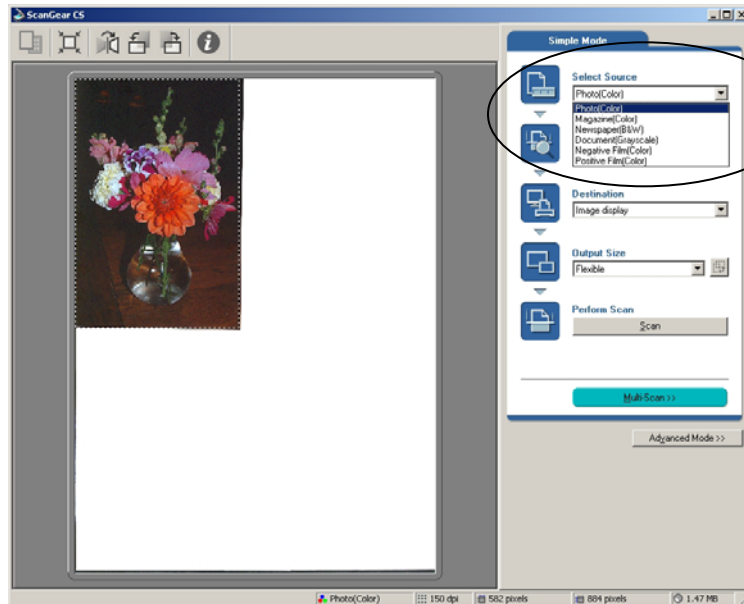


# Canon Scanner Instructions

1. Place a photo or document on the glass by aligning its top edge with the alignment mark and close the document cover.
2. Select START, PROGRAMS, *ArcSoft PhotoStudio 5.5*.
3. Click the Acquire Icon or click the FILE menu and select Acquire.  
*ScanGear CS will start*



4. Select SELECT SOURCE.  
*You can select from the following options,  
Photo(Color)/Magazine(Color)/Newspaper (B&W)/Document (Grayscale)*



5. Click PREVIEW.

*After calibration, the preview scan will start and gradually display the image. The image is automatically cropped at its original size.*

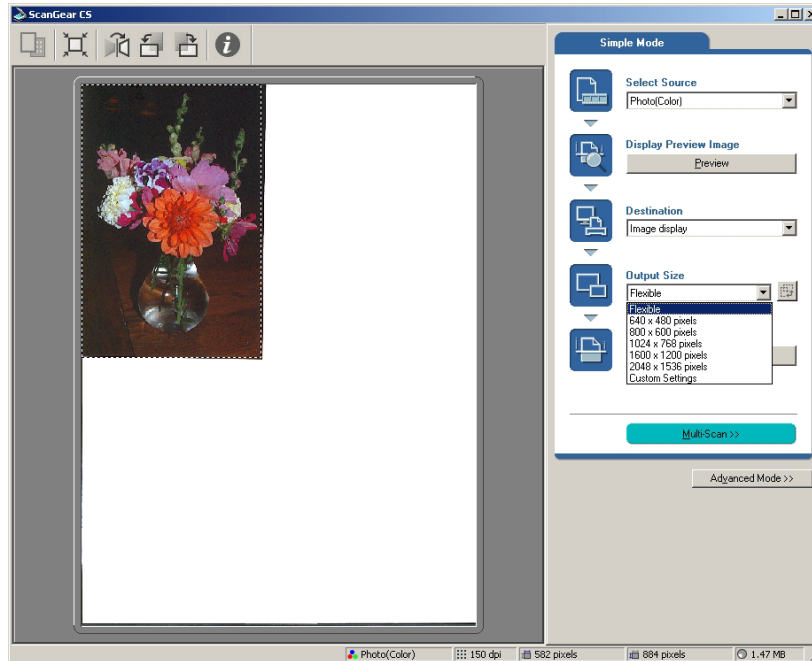
*If you want to trim the image further, drag the mouse diagonally to select the area.*

6. Select the DESTINATION

*You can select Print or Image display.*

*When Print is selected, the output resolution is set to 300 dpi*

*When Image Display is selected, it is set to 150 dpi.*



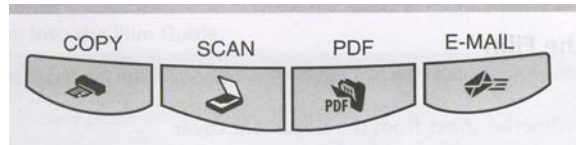
7. Select the OUTPUT SIZE

8. Click SCAN; *the final scan will start.*

9. Click the close box in the ScanGear CS window. *The scanned image will appear in the PhotoStudio window.*

10. Save the scanned image. *Click the File menu and select the desktop, name the file and click save.*

## Using the Scanner Buttons



**COPY Button:** *To print (copy) the scanned image with a printer:*

1. Press the COPY button.  
*The scanner will scan the item.  
The scanned image will print.*

**PDF Button:** *To save the scanned image as a PDF file:*

1. Press the PDF button.  
*The scanner will scan the item.  
Multiple items can be scanned continuously.  
The scanned image will be saved as a PDF document and appear in Adobe Acrobat Reader.*

**SCAN Button:** *To open the scanned image in the PhotoStudio window:*

1. Press the SCAN button.  
*The scanner will scan the item.  
The scanned image will appear in the PhotoStudio window.*

**E-MAIL Button:** *To attach the scanned image to a new e-mail message.*

1. Press the E-MAIL button.  
*The scanner will scan the item.  
The email software will start and the scanned image will be attached in a new message window.*