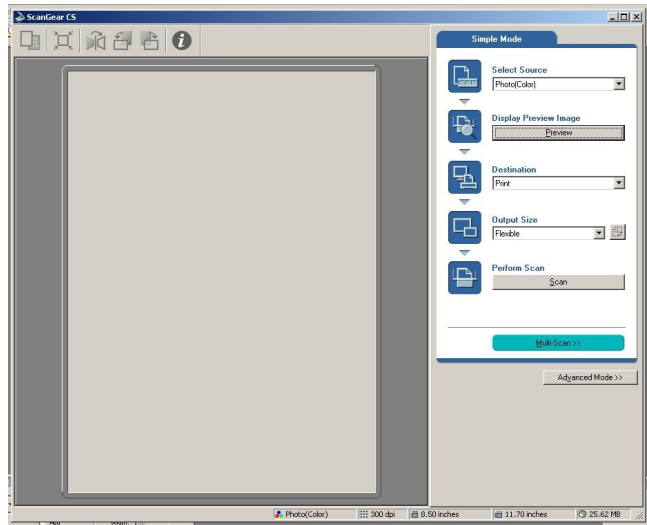
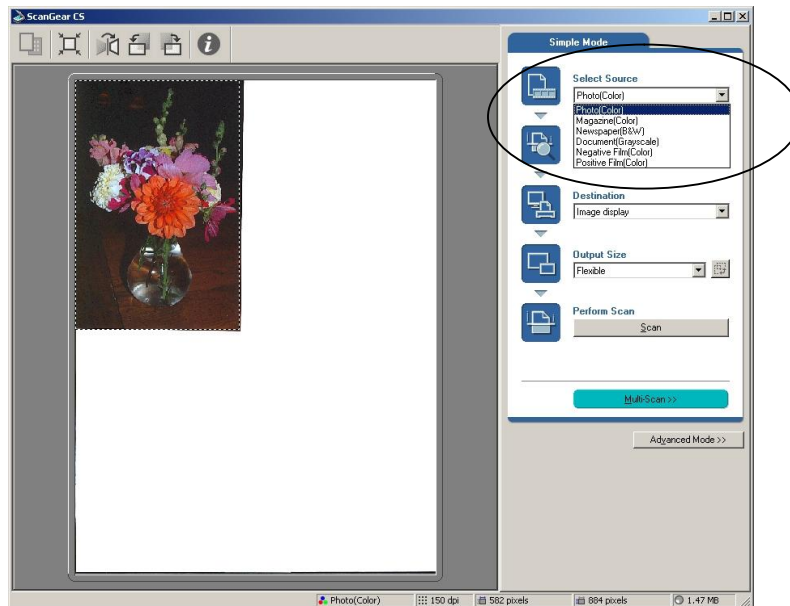


Canon Scanner Instructions

1. Place a photo or document on the glass by aligning its top edge with the alignment mark and close the document cover.
2. Select START, PROGRAMS, *ArcSoft PhotoStudio 5.5*.
3. Click the Acquire Icon or click the FILE menu and select Acquire.
ScanGear CS will start



4. Select SELECT SOURCE.
*You can select from the following options,
Photo(Color)/Magazine(Color)/Newspaper (B&W)/Document (Grayscale)*



5. Click PREVIEW.

After calibration, the preview scan will start and gradually display the image. The image is automatically cropped at its original size.

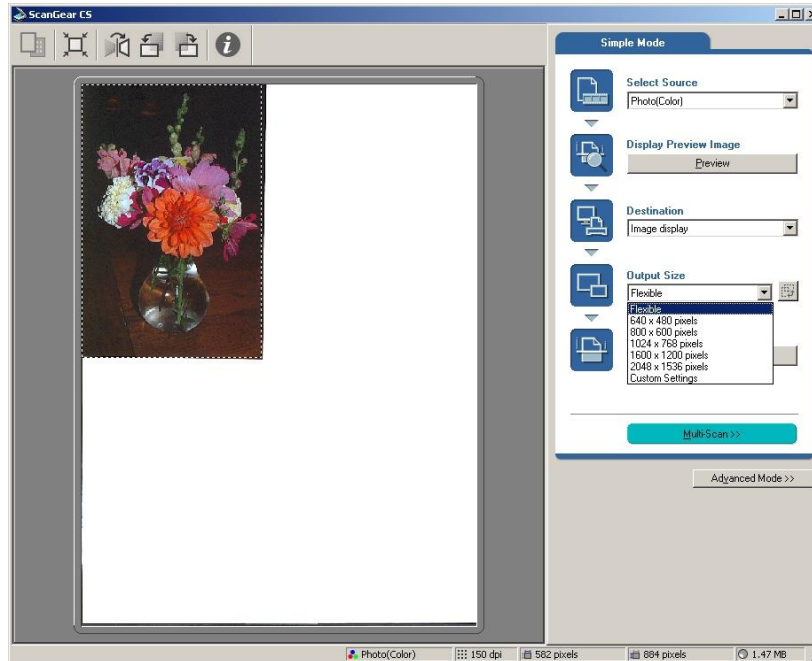
If you want to trim the image further, drag the mouse diagonally to select the area.

6. Select the DESTINATION

You can select Print or Image display.

When Print is selected, the output resolution is set to 300 dpi

When Image Display is selected, it is set to 150 dpi.



7. Select the OUTPUT SIZE

8. Click SCAN; *the final scan will start.*

9. Click the close box in the ScanGear CS window. *The scanned image will appear in the PhotoStudio window.*

10. Save the scanned image. *Click the File menu and select the desktop, name the file and click save.*