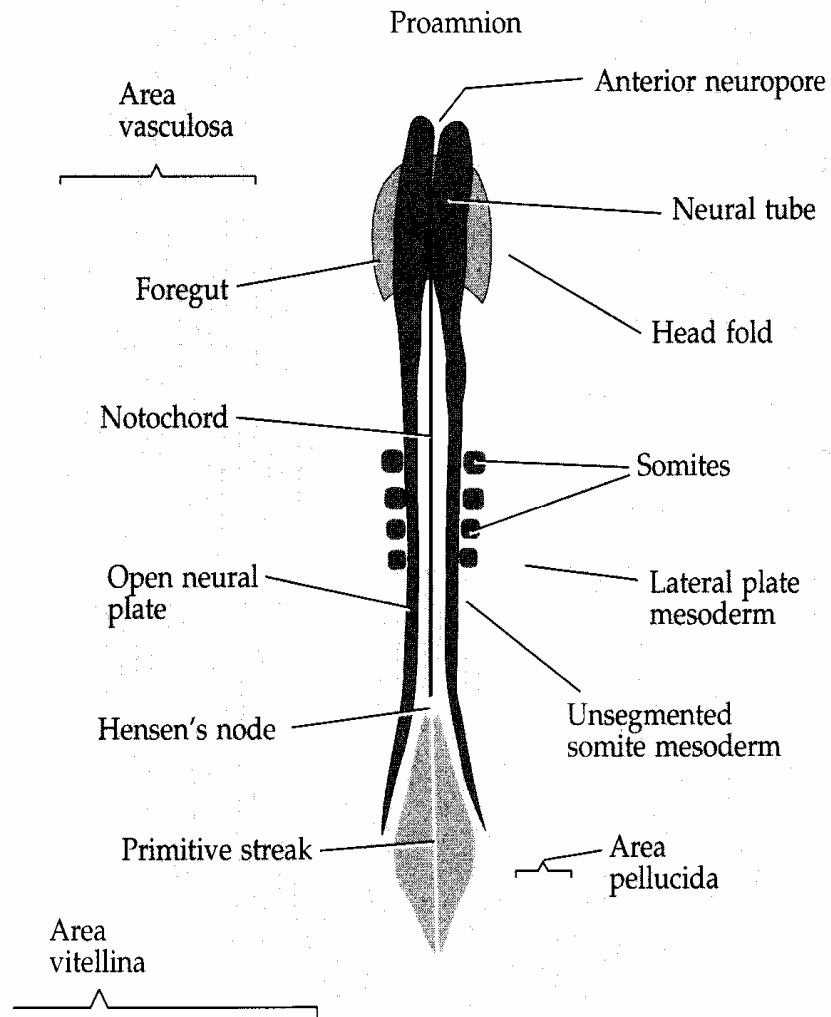
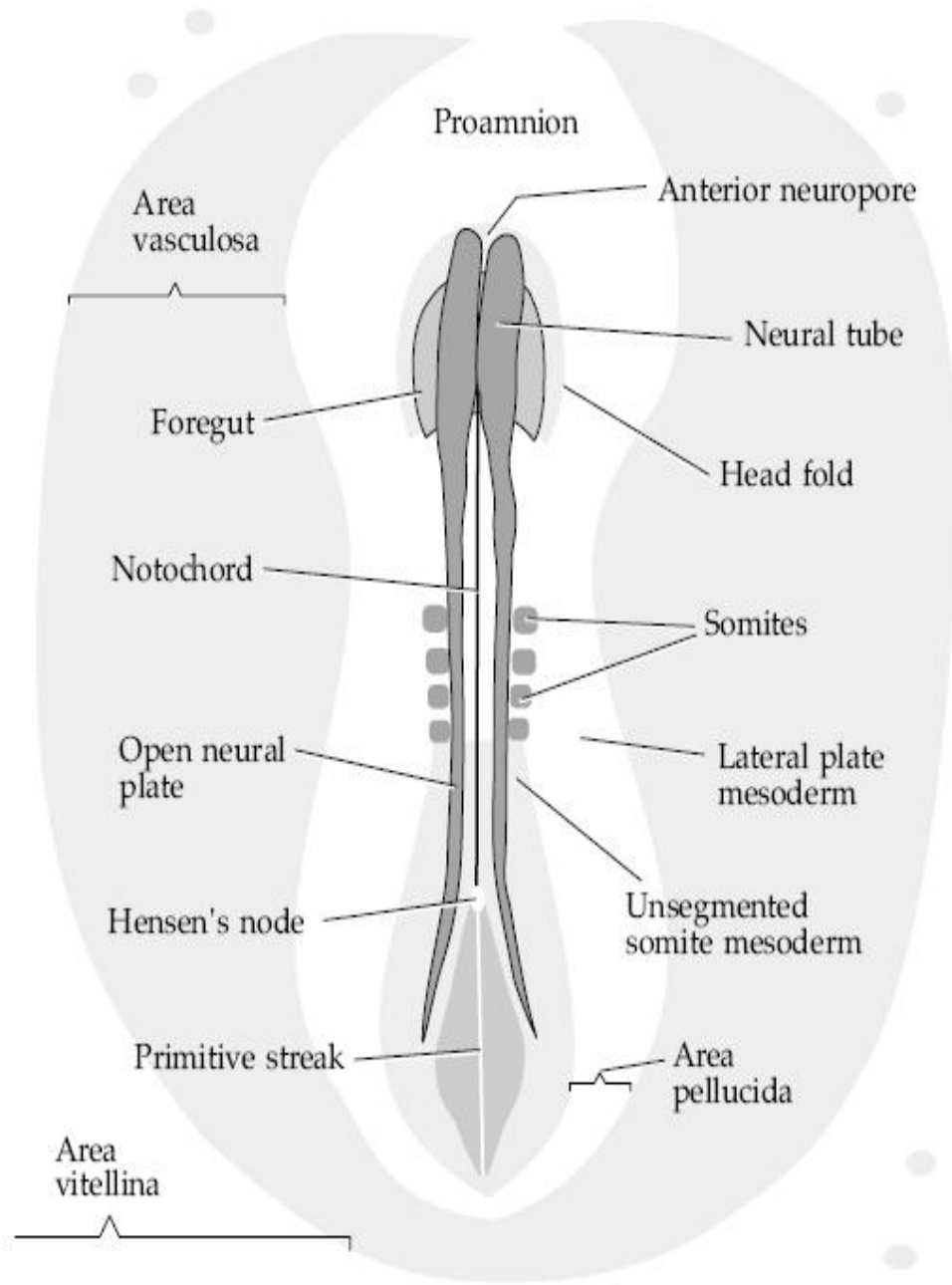


# Chick Embryonic Development



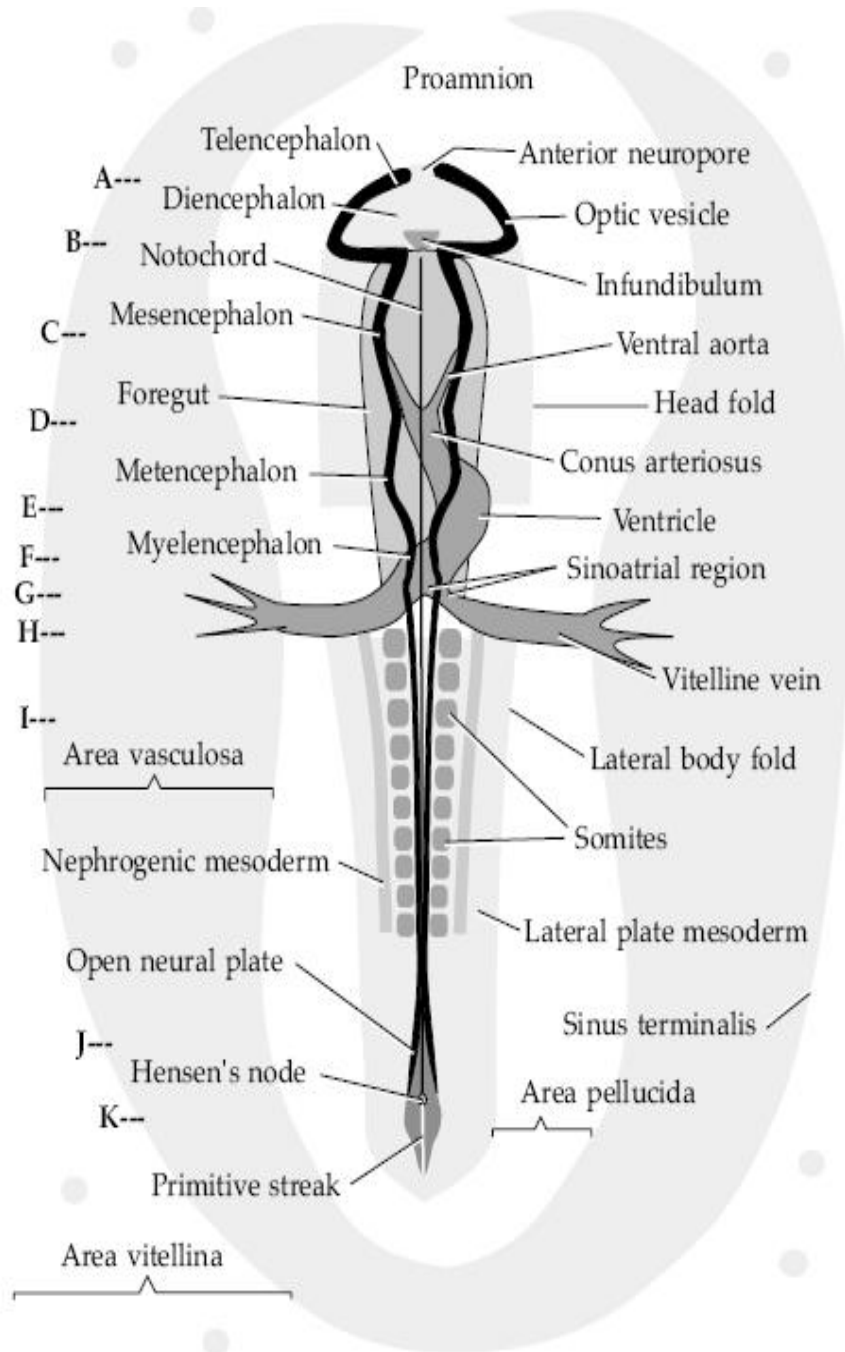
24 h chick; Mary Tyler. 2006. Developmental Biology:  
A Guide for Experimental Study, p. 10-3

# Chick Embryonic Development



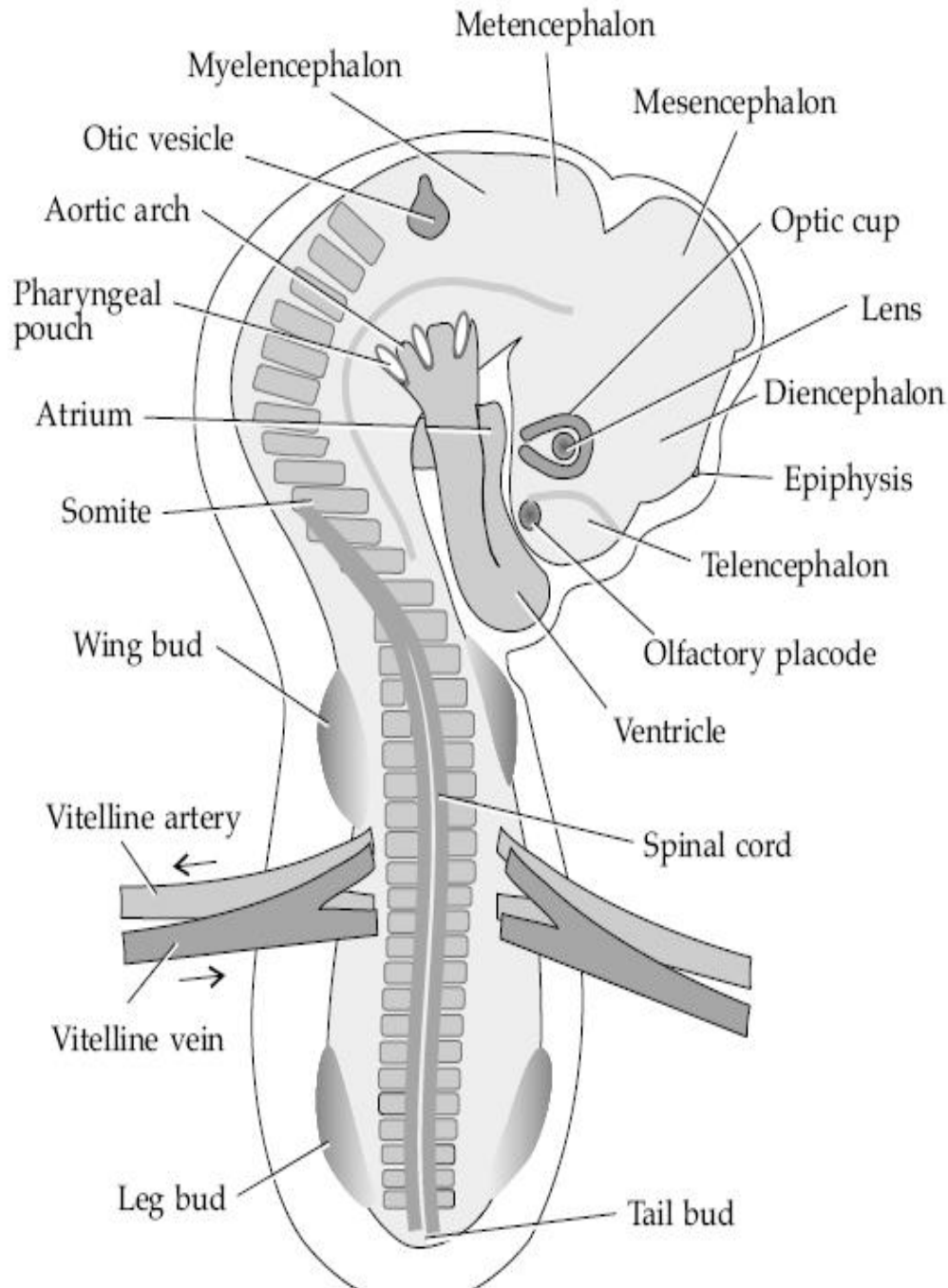
24 h chick; Mary Tyler. 2006. *Developmental Biology: A Guide for Experimental Study*, p. 9-10

# Chick Embryonic Development



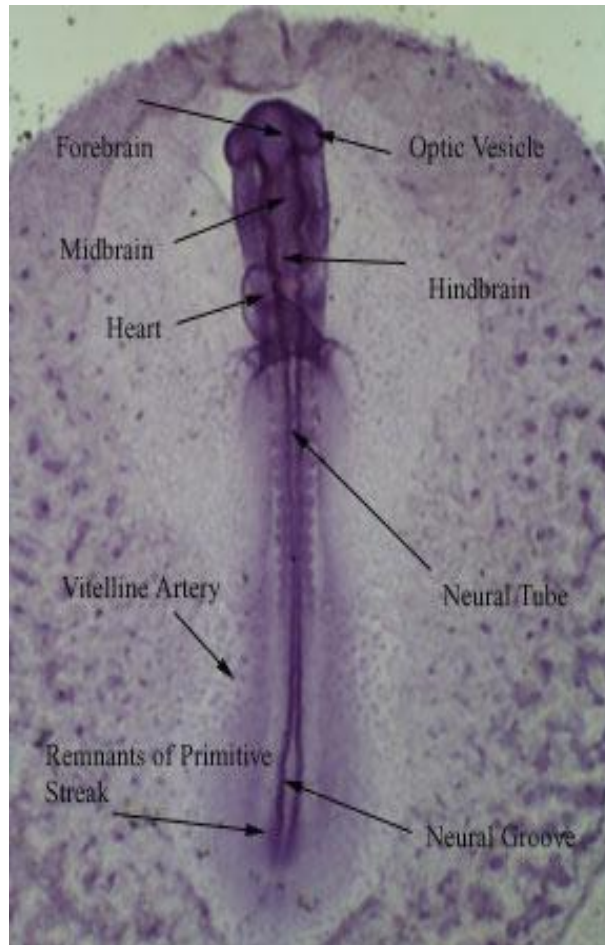
33 h chick; Mary Tyler. 2006. *Developmental Biology: A Guide for Experimental Study*, p. 10-3

# Chick Embryonic Development



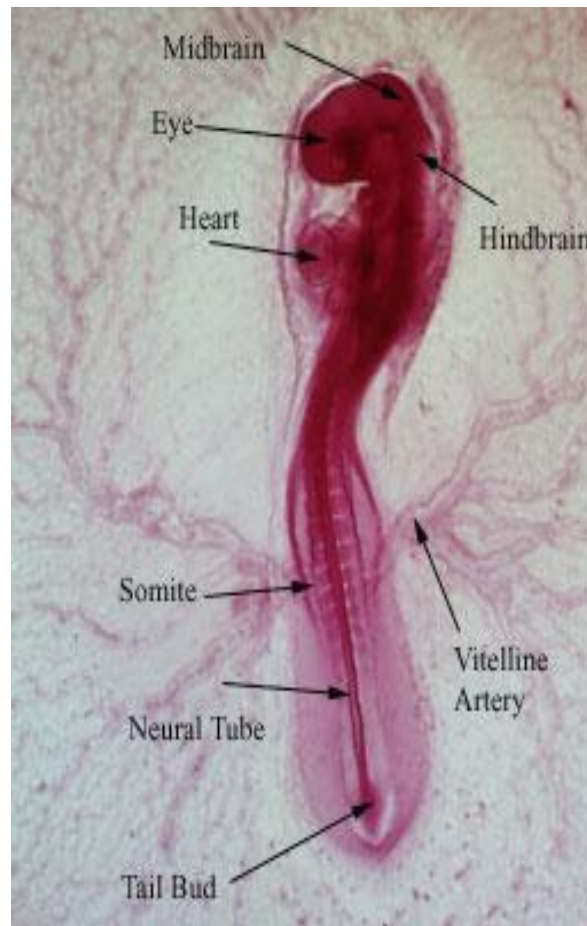
72 h chick; Mary Tyler. 2006. *Developmental Biology: A Guide for Experimental Study*, p. 11-3

# Chick st. 11; 13 somites, 40–45 h



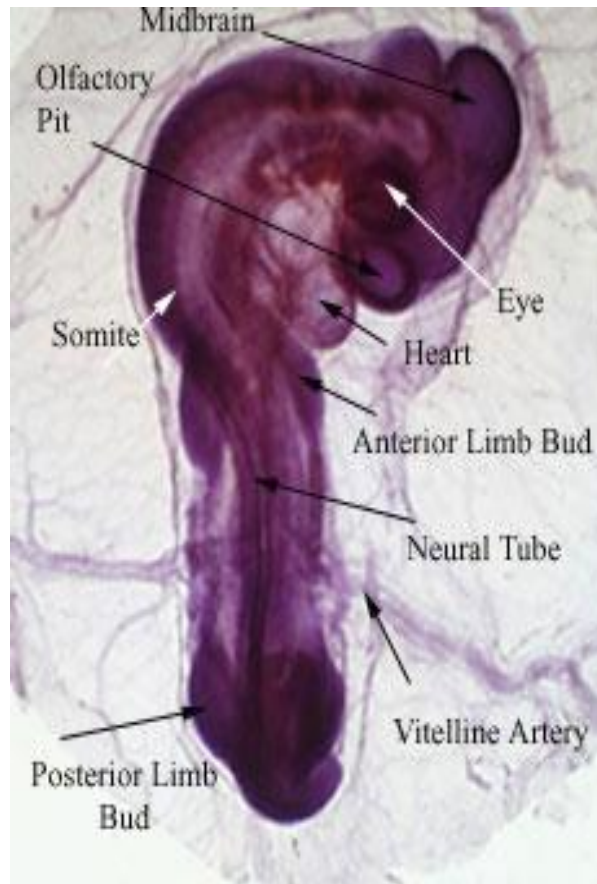
Stage 11 chick embryo, as determined by the [Hamurger and Hamilton staging series \(1951\)](#). Picture courtesy of Prof. Judy Cebra-Thomas.

## Chick st. 14; 22 somites, 50-53 h



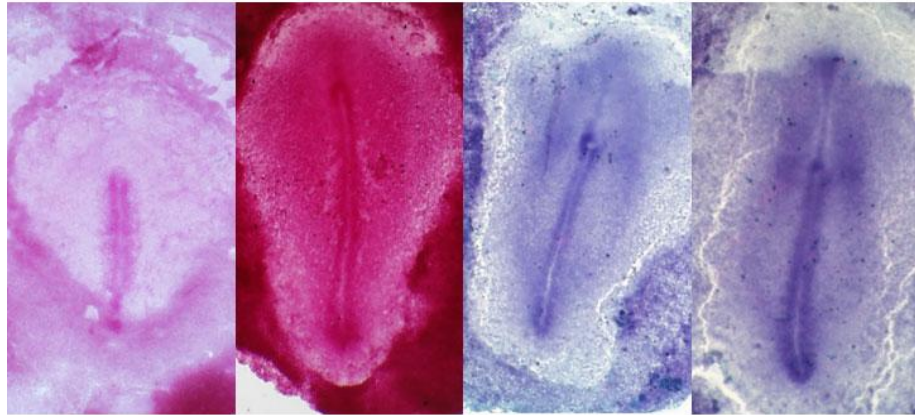
Stage 14 chick embryo, as determined by the [Hamburger and Hamilton staging series](#) (1951). Picture courtesy of Prof. Judy Cebra-Thomas.

# Chick st. 18; early allantois, 3 d



Stage 18 chick embryo, as determined by the [Hamburger and Hamilton staging series \(1951\)](#). Picture courtesy of Prof. Judy Cebra-Thomas.

# Chick Embryo Staging



**Stage**

**3**  
12-13 h

**4**  
18-19 h

**5**  
19-22 h

**6**  
23-24 h



**Stage**

**7**  
23-26 h

**8**  
26 h

**8**  
26-29 h

**9**  
29-33 h



**Stage**

**10**  
33-38 h

**11**  
40-45 h

**12**  
45-49 h

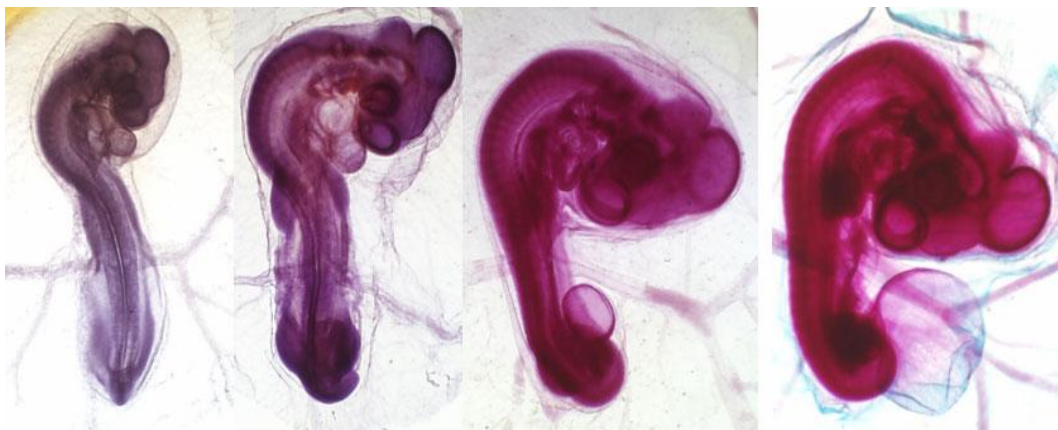
**13**  
48-52 h



# Chick Embryo Staging



**Stage**      **14**                      **15+**                      **16+**                      **17**  
                    50-53 h                      55+ h                      56+ h                      52-64 h



**Stage**      **17+**                      **18**                      **20**                      **21**  
                    64+ h                      72 h                      3-3.5 d                      3.5 d

© Prof. Judy Cebra-Thomas, Swarthmore College

Chick staging based on Hamburger V and Hamilton, HL. 1951. A series of normal stages of development of the chick embryo. J Morph 88:49-62