

FEATURES



**SYNC AUDIO WITH
OTHER JBL
SPEAKERS**



**12 HR BATTERY LIFE
USB CHARGING**



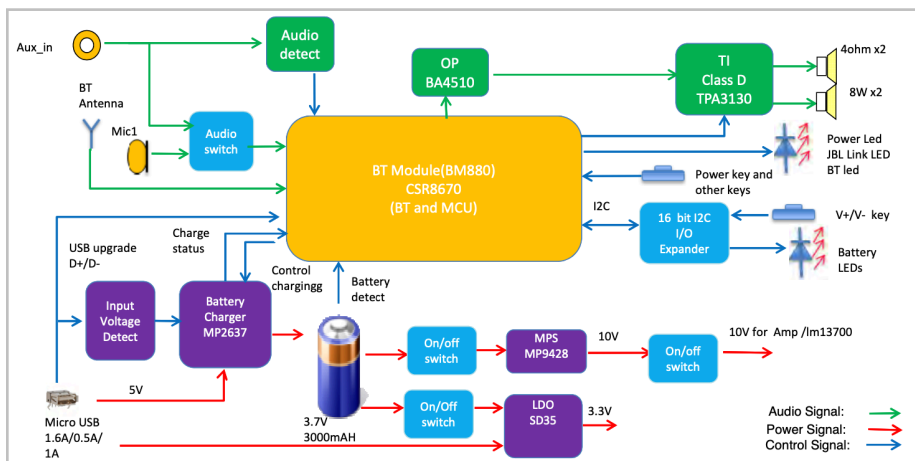
**WATER RESISTANCE
MAX DEPTH OF 3.3 FT**

JBL FLIP 4

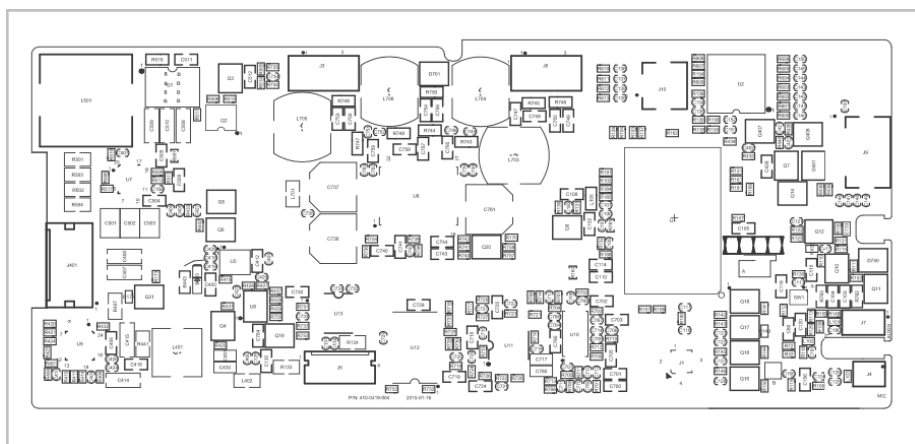


Description	Specification
Rated Output Power	2 x 8W +-10% (Measure before power limiter at 1% THD). Please refer to Acoustic Design Specification.
Input Sensitivity	Aux : 370mV +/- 10% Wireless input:-9dBfs +/-1dB
Input Overload	Aux : 1V rms BT: 0dBFS
Auto Turn On Input Sensitivity	@1KHz, Typical : 2mV Limit : 4mV @100Hz Typical : 10mV Limit :15mV
Frequency Response (Output Power)	Aux_in : 40Hz to 20KHz +/- 1dB (EQ setting is disable) BT: 20Hz to 19KHz +/- 1dB (EQ setting is disable)
Frequency Response (Output Power) with EQ setting	TBC
THD+N at 1W	<0.5% @100hz/7khz, else<0.3%
THD+N at Rated Output Power	<1%
Signal-to-Noise ratio at Rated Output Power	80dB (A-Weighted)
Channel Separation	45dB @100Hz 50dB @1KHz 45dB @10KHz
Channel Crosstalk	80dB @100Hz 75dB @1KHz 70dB @10KHz
Inter Channel Gain Difference	<0.5dB
Residual Noise	80nW

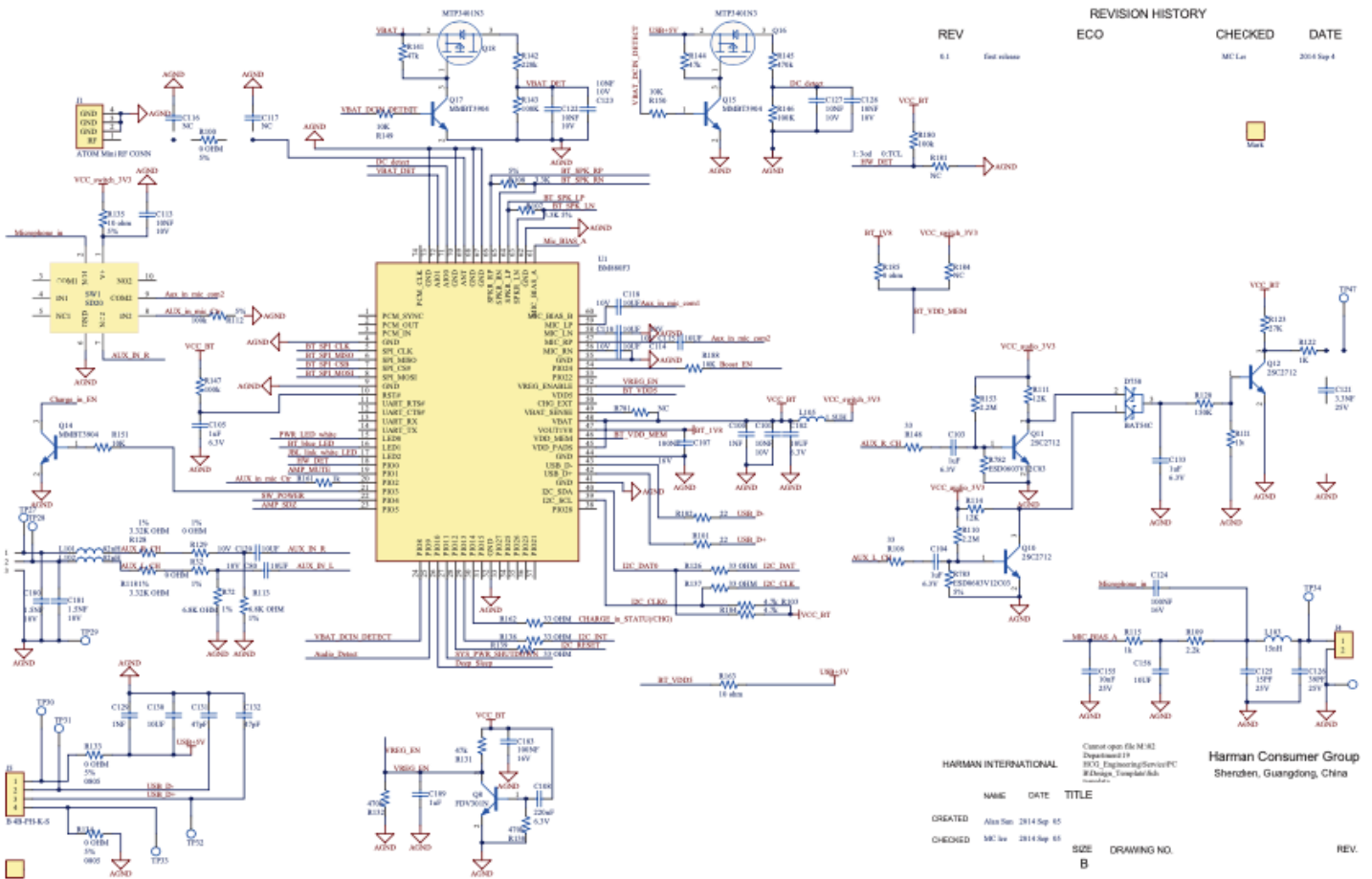
SPECIFICATIONS FOR POWER RELATED TO AUDIO SIGNAL



SIMPLIFICATION OF CIRCUIT OPERATION



CIRCUIT BOARD OVERVIEW



REVISION HISTORY

ECO	CHECKED	DATE
6.1	MC Liu	2014 Sep 4

HARMAN INTERNATIONAL

NAME DATE TITLE

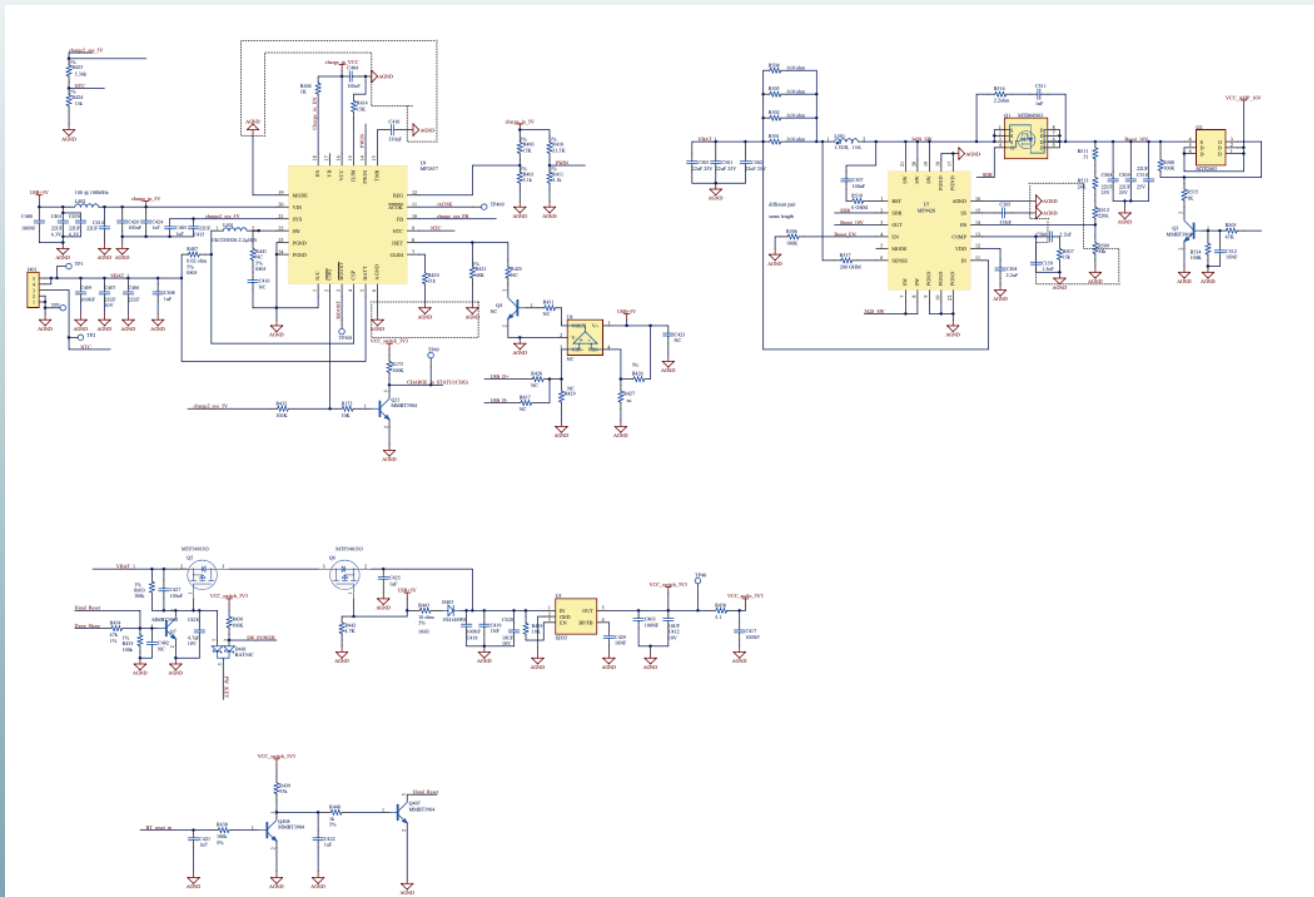
CREATED: Alex Sun 2014 Sep 05

CHECKED: MC Liu 2014 Sep 05

SIZE DRAWING NO. REV.

B

CIRCUIT DIAGRAMS FOR AUDIO POWER TECH



CIRCUIT DIAGRAMS FOR BATTERY POWER TECH AND ADDITIONAL FUNCTIONS

SOURCES:

https://elektrotanya.com/jbl_flip_3_sm.pdf/download.html#dl

<https://hackaday.io/project/162337-reverse-engineering-jbl-flip-4/details>