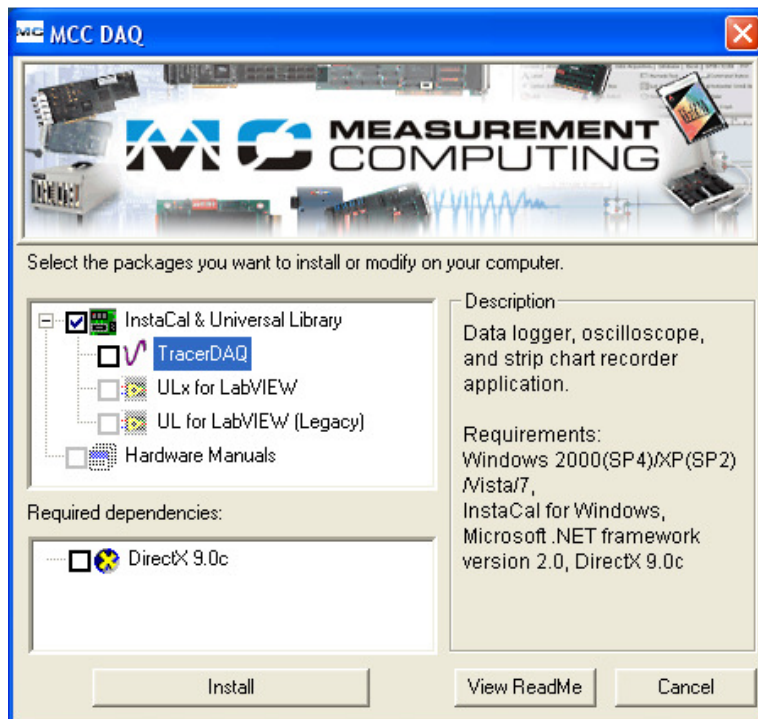


# LogiScan Software Installation Manual

## Step 1: Download and install “mccdaq.exe”

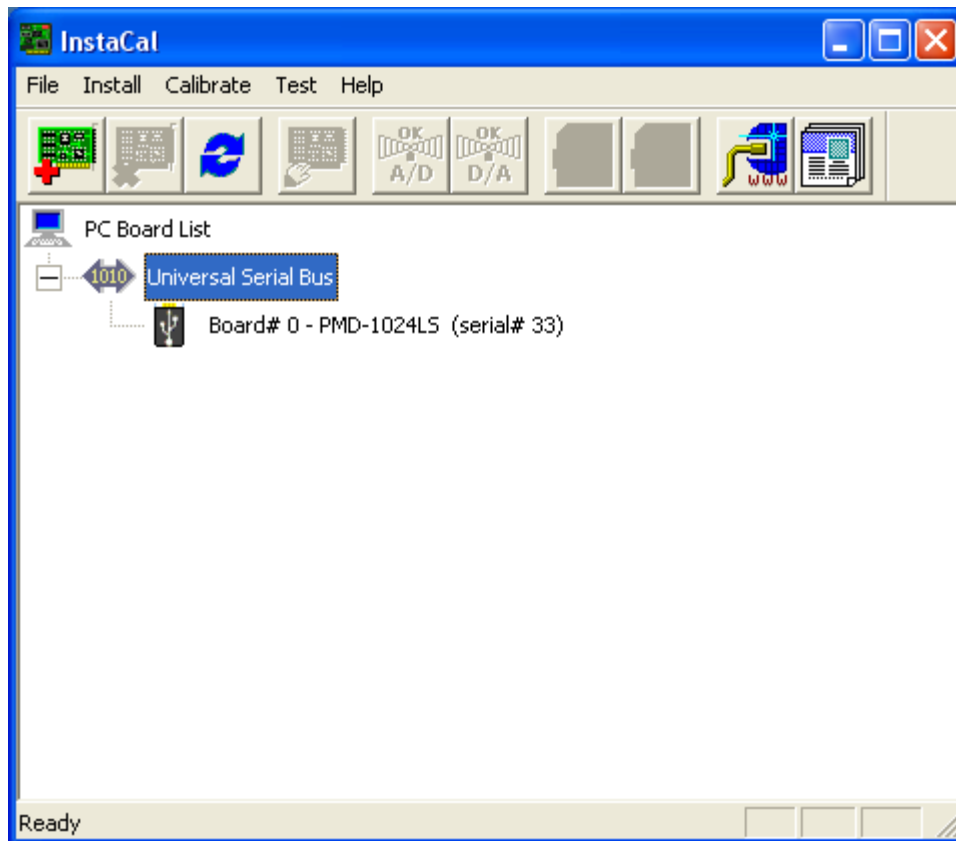
When you run mccdaq.exe, it first extracts the code and then installs the software. When it comes to below window, uncheck the **TraceDAQ** item which will also uncheck the DirectX9.0c item. Click the **Install** button to complete the installation.



## Step 2: Run InstaCal and check if the driver recognizes the PMD-1024LS board

Run Start/All Programs/Measurement Computing/InstaCal

If the board is correctly recognized, you should see the following window.



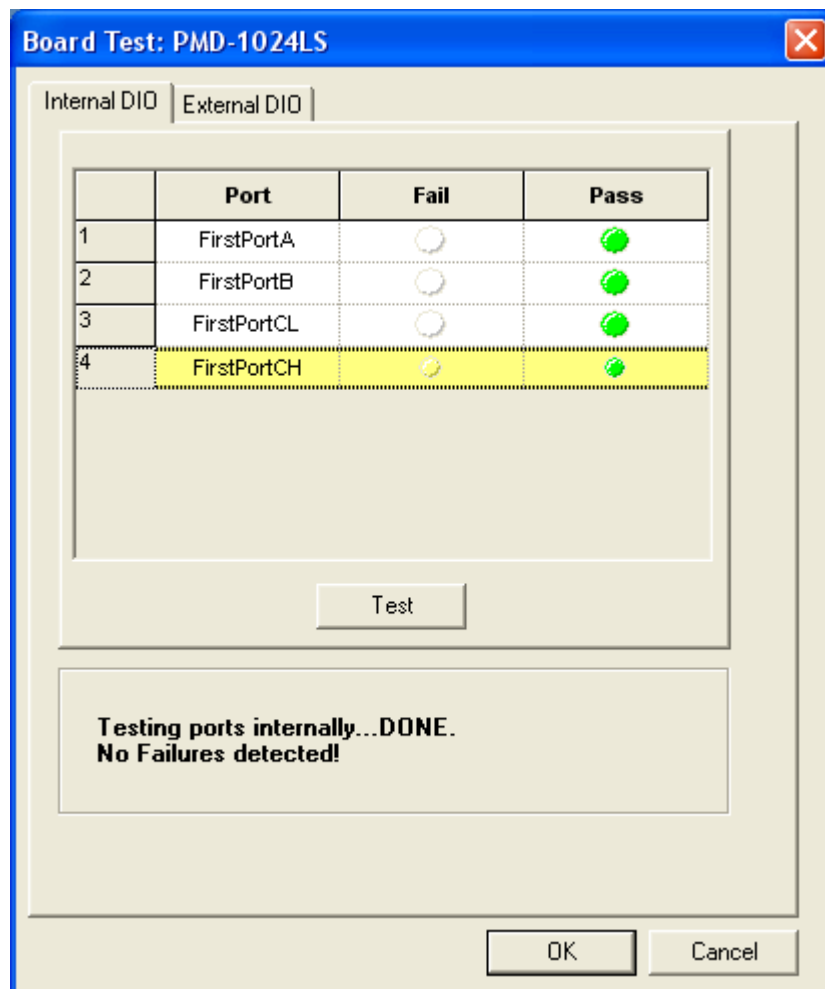
Click the OK button and make sure that the board number is set to "0", i.e., you should see the following line under the Universal Serial Bus:

Board #0 – PMD – 1024LS (serial# 33)

The default Board # is 0 as shown above. If it is not, you should correct the board # to 0 by right click on the "Board #..." and then selecting "Change Board #...". The LogiScan program was hard coded to only work with the board# 0. The serial number could be different, depending on the board.

### Step 3: Test the board using InstaCal

From InstaCal, click the Test/Digital menu. The window titled **Board Test PMD-1024LS** will show up. Please make sure that you have no connections on the I/O ports. Click the Test button. If it passes, the Pass column should be all green as shown in below screen capture.



Now you are ready to install the LogiScan software.