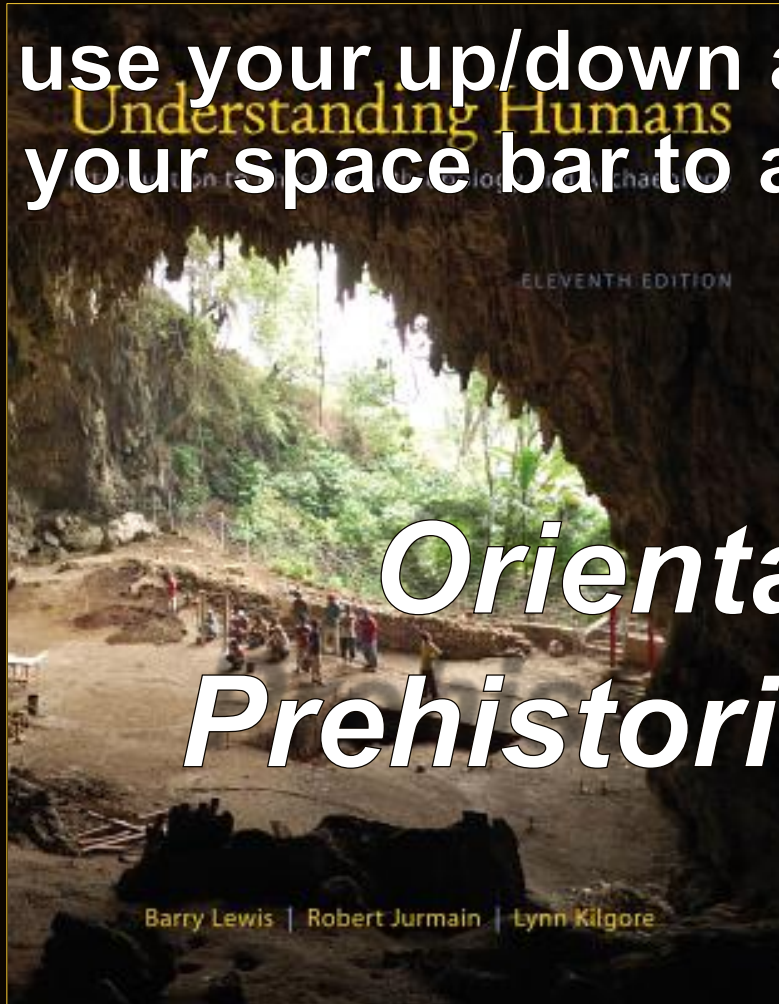


use your up/down arrow keys and/or
your space bar to advance the slides

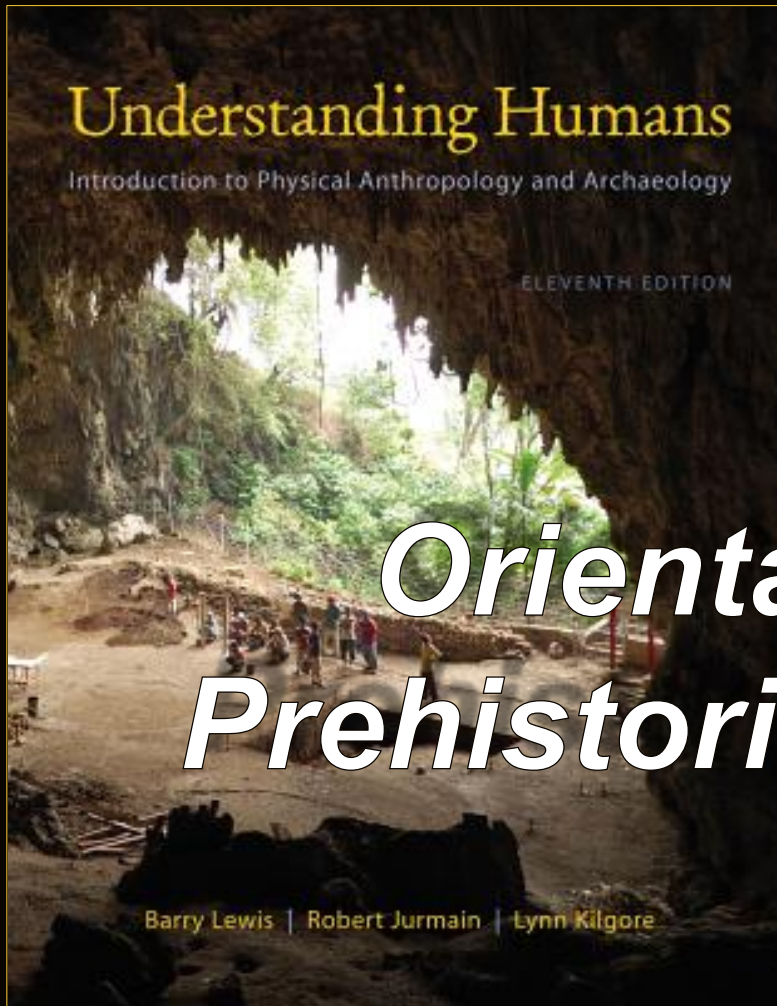


Orientation to Prehistoric Cultures



*University of Minnesota Duluth
Tim Roufs*

© 2010-2013



Orientation to Prehistoric Cultures



University of Minnesota Duluth
Tim Roufs
© 2010-2013

<http://www.d.umn.edu/cla/faculty/troufs/anth1602/>

one item you will see often

(and often repeated)

**is that American Anthropology
traditionally has a four-fold
approach to the study of humans
and closely related species**

these four fields include . . .

American Anthropology

- **cultural / social**
- **physical**
- **archaeology**
- **linguistics**

**so why study
Prehistoric Cultures?**

**it's an excellent place to find out
about many fascinating aspects
relating to humans . . .**

**and you already know a lot about
those sorts of things . . .**

**just have a look at the little
pictures on the course materials,
for e.g., . . .**



Neandertals



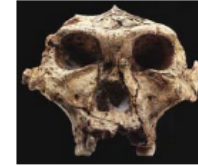
Western lowland gorilla



"Hobbit"



"Ötzi"
"The Iceman"



Australopithecus robustus
SK 48



Jane Goodall



Pierolapithecus



Homo sapiens
-- a bipedal hominid



Homo erectus



Kung San Hunters



Charles Lyell



"Lucy"



Late Sumerian ziggurat
Ur, Iraq



Cro-Magnon



Maya stela, Copán, Honduras



Homo erectus
Java



Cro-Magnon I

Mother Goddess Hagar Qim, Malta



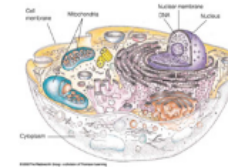
Copán, Honduras



Olmec Head, Mexico



Grotte Chauvet, France



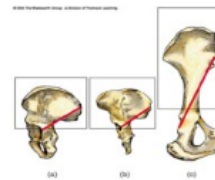
generalized cell



Royal Mycenaean Death Mask



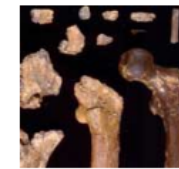
Venus of Willendorf, Austria



Homo sapiens, Australopithecus and Chimpanzee



Clovis point



Fossilized Bones Orrorin tugenensis



Laetoli (Tanzania)



Bonobos
The Last Great Ape



Alan Alda
talks with anthropologist Mary Marzke



"Two old ergaster in the arid environment of Africa 1.5 million years ago."

**and lots of people find these
topics interesting . . .**

there have been
almost three million
page views of the UMD
Prehistoric Cultures WebPages . . .

**and lots of people find these
topics interesting . . .**

there have been


almost three million

page views of the UMD

Prehistoric Cultures WebPages . . .



in the last few years there has been almost
three million page visits to the
Prehistoric Cultures course pages . . .

© 1998 - 2013 Timothy G. Roufs — All rights reserved 
Page URL: <http://www.d.umn.edu/cla/faculty/troufs/anth1602/pccal-f2012.html>
Last Modified 02 September 2012
[Site Information](#) / [Disclaimers](#) ~ [Main A-Z Index](#)

2,976,115
[View Stats](#)

[Maps & Directions](#) | [Parking](#) | [Contact UMD](#) | [Site Map](#) | [Privacy](#) | [DMCA](#)

© 2012 University of Minnesota Duluth
The University of Minnesota is an equal opportunity educator and employer.
Last modified on 09/02/12 12:28 PM

University of Minnesota Campuses
[Crookston](#) | [Duluth](#) | [Morris](#)
[Rochester](#) | [Twin Cities](#) | [Other Locations](#)



x Find: [Next](#) [Previous](#) [Highlight all](#) Match case

**but Prehistoric Cultures is also an
excellent place to have a look at
all four fields of American
Anthropology . . .**

American Anthropology

- **cultural / social**
- **physical**
- **archaeology**
- **linguistics**

so . . .

we're going to have a look at . . .

so . . . we're going to have a look at . . .

Prehistory and Primates

and their . . .

- **cultural / social**
- **physical**
- **archaeology**
- **linguistics**

aspects

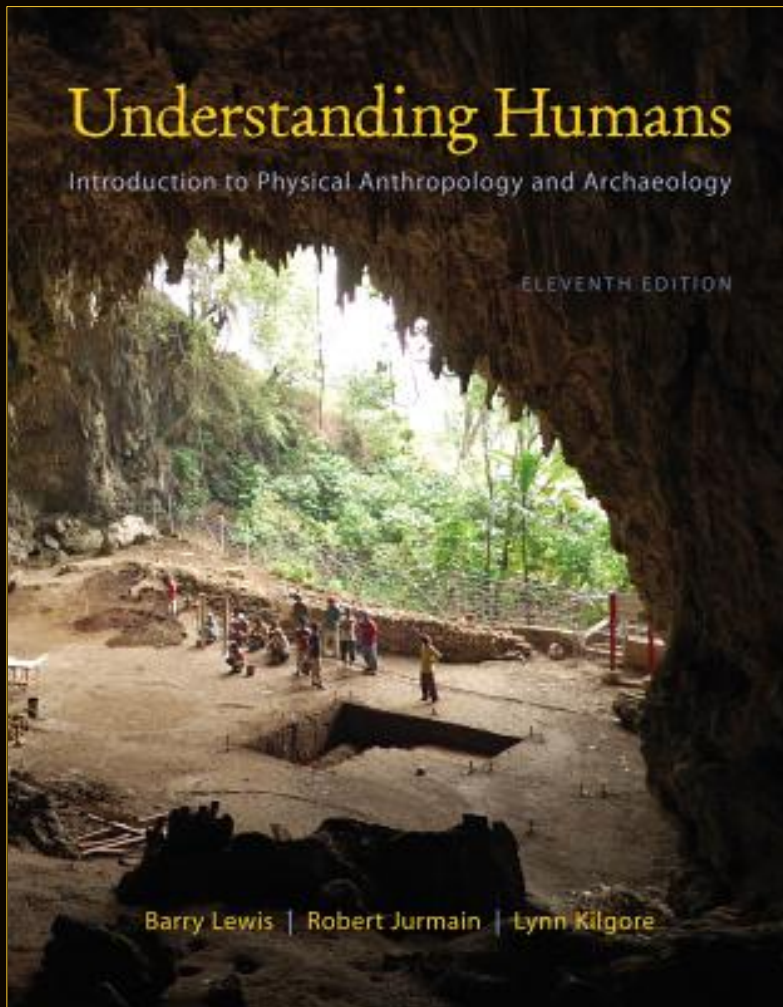
**and you'll visit these same fields
as you go through your text . . .**

Understanding Humans

Introduction to Physical Anthropology and Archaeology

ELEVENTH EDITION

Barry Lewis | Robert Jurmain | Lynn Kilgore



**and you'll visit these same fields
as you go through your and other
class materials . . .**



ANTH 1601 Freshman Seminar: Prehistoric Cultures (sec 001) Fall 2012, Duluth

moodle2

Home ► My courses ► ANTH1601_001F12D

Messages

No messages waiting
[Messages](#)

Online users

(last 5 minutes)

Tim Roufs

Search forums

[Advanced search](#)

Quick links for students

[Watch online orientation](#)

[User guides](#)

[Student support forums](#)

Email:
moodle@umn.edu

Calendar

August 2012

Sun	Mon	Tue	Wed	Thu	Fri	Sat
			1	2	3	4
5	6	7	8	9	10	11
12	13	14	15	16	17	18
19	20	21	22	23	24	25
26	27	28	29	30	31	

Events key

Global Course

Subject Index: [A](#) [B](#) [C](#) [D](#) [E](#) [F](#) [G](#) [H](#) [I](#) [J](#) [K](#) [L](#) [M](#) [N](#) [O](#) [P](#) [Q](#) [R](#) [S](#) [T](#) [U](#) [V](#) [W](#) [X](#) [Y](#) [Z](#)

Please do not copy/paste text directly from Microsoft Word. See explanation here
Use Notepad with Windows and TextEdit with Macs

Moodle "Block 1" DAY

Tim Roufs

Please get acquainted with the course site; review the course information materials and other links.
If you have not used Moodle course management system before, please view the Orientation tutorial.



Section links

1 2 3 4 5 6 7 8 9 10 11 12
13 14 15 16

Course Resources

- [Video Schedule](#)
- [Class Slides \(PowerPoints\)](#)
- [Participation Guidelines](#)
- [Technology Requirements](#)
- [On-line Study Tips](#)
- [Accessibility Support](#)
- [Library](#)
- [Food of Countries/Cultures](#)
- [UMD Workshops](#)

Latest news






[Add a new topic...](#)
(No news has been posted yet)

Additional Learner Support Resources

- [Course Slides Information](#)
- [Student Support Services](#)
- [Online Study Tips](#)
- [Glossary of Terms](#)
- [Class slides](#)
- [Helens "How to" Guides](#)

**and you'll start right off with a
look at “What’s New” in
anthropology at the Texas A&M
Anthropology World News
WebPage . . .**


Grading and Exams

-  [Quiz 1 Information](#)
-  [Quiz 2 Exam Information](#)
-  [Final Exam Information](#)
-  [Grading Information and Academic Policies](#)
-  [Information on Points for Forum Posts](#)



 [How to Study for Exams](#)

Case Study

Take a little time the first couple of weeks to check out the Texas A&M site on world news and see "What's New."

 [What's New Case Study is Due 21 September 2012](#)

Student Collaboration Space

-  [Live chat for Project Collaboration](#)
-  [General Student Discussion Area](#)

DEPARTMENT OF ANTHROPOLOGY

At Texas A&M University

[Home](#) | [People](#) | [Programs](#) | [Admissions](#) | [Graduation Requirements](#) | [Centers and Labs](#) | [Showcase](#) | [Theses](#) | [Links](#)

Anthropology World News

Displaying 1 - 51 out of 4856 News Stories

Displaying Newest | [Older](#)

- Vasa – The Lopsided Warship - [Past Horizons](#) (2012-08-31)
- The Evolution of Fairness - [Pacific Standard](#) (2012-08-31)
 - 1 - Fishing Rocks - [Pacific Standard](#) (2012-08-31)
 - 2 - The Path to Keatley Creek - [Pacific Standard](#) (2012-08-31)
 - 3 - The Pit House - [Pacific Standard](#) (2012-08-31)
 - 4 - House Pit Seven - [Pacific Standard](#) (2012-08-31)
 - 5 - Artifacts - [Pacific Standard](#) (2012-08-31)
 - 6 - Two Paths to Inequality - [Pacific Standard](#) (2012-08-31)
 - 7 - How Inequality Began - [Pacific Standard](#) (2012-08-31)
 - 8 - Seeing Fairness Evolve - [Pacific Standard](#) (2012-08-31)
 - 9 - Conclusion: The Judgment of Fairness - [Pacific Standard](#) (2012-08-31)
- Genome Brings Ancient Girl to Life - [Science](#) (2012-08-30)
 - 1 - New DNA analysis shows ancient humans interbred with Denisovans - [Nature](#) (2012-08-31)
 - 2 - DNA unveils enigmatic Denisovans - [Science News](#) (2012-08-31)
 - 3 - Scientists reconstruct genetic makeup of 50,000-year-old girl - [Guardian](#) (2012-08-30)
 - 4 - Genome of ancient Denisovans may help clarify human evolution - [Los Angeles Times](#) (2012-08-30)
 - 5 - DNA of girl from Denisova cave gives up genetic secrets - [BBC News](#) (2012-08-31)
 - 6 - Pinky DNA Points To Clues About Ancient Humans - [NPR](#) (2012-08-30)
 - 7 - Genome of Mysterious Extinct Human Reveals Brown-Eyed Girl - [LiveScience](#) (2012-08-30)

x Find: introd

[Next](#) [Previous](#) [Highlight all](#) Match case

DEPARTMENT OF ANTHROPOLOGY At Texas A&M University

[Home](#) | [People](#) | [Programs](#) | [Admissions](#) | [Graduation Requirements](#) | [Centers and Labs](#) | [Showcase](#) | [Theses](#) | [Links](#)

Anthropology World News

Displaying 1 - 51 out of 4856 News Stories

Displaying Newest | Older

- Vasa – The Lopsided Warship - [Past Horizons](#) (2012-08-31)
- The Evolution of Fairness - [Pacific Standard](#) (2012-08-31)
 - 1 - Fishing Rocks - [Pacific Standard](#) (2012-08-31)
 - 2 - The Path to Keatley Creek - [Pacific Standard](#) (2012-08-31)
 - 3 - The Pit House - [Pacific Standard](#) (2012-08-31)

more on that later . . .

- Genome Brings Ancient Girl to Life - [Science](#) (2012-08-30)
 - 1 - New DNA analysis shows ancient humans interbred with Denisovans - [Nature](#) (2012-08-31)
 - 2 - DNA unveils enigmatic Denisovans - [Science News](#) (2012-08-31)
 - 3 - Scientists reconstruct genetic makeup of 50,000-year-old girl - [Guardian](#) (2012-08-30)
 - 4 - Genome of ancient Denisovans may help clarify human evolution - [Los Angeles Times](#) (2012-08-30)
 - 5 - DNA of girl from Denisova cave gives up genetic secrets - [BBC News](#) (2012-08-31)
 - 6 - Pinky DNA Points To Clues About Ancient Humans - [NPR](#) (2012-08-30)
 - 7 - Genome of Mysterious Extinct Human Reveals Brown-Eyed Girl - [LiveScience](#) (2012-08-30)

x Find: introd

[Next](#) [Previous](#) [Highlight all](#) Match case

**and to study Prehistoric Cultures
in this tradition there are a few
basic characteristics of
anthropology to keep in mind . . .**

Main Characteristics

1. the ***four fields*** of general anthropology
2. ***culture*** as a primary *concept*
3. ***comparative method*** as major *approach* to the study of human behavior
4. ***holism*** or the study of "humankind" as a whole, as a *primary theoretical goal*
5. ***fieldwork*** as a primary research technique, involving "*participant observation*"

Main Characteristics

1. the *four fields* of general anthropology
2. *culture* as a primary concept
3. *comparative method* as major

more on this later . . .

4. *holism* of the study of humankind as a whole, as a *primary theoretical goal*
5. *fieldwork* as a primary research technique, involving “*participant observation*”

**finally, to round off our theoretical
perspectives, we'll have a brief
look at . . .**

a few

“Other Important Terms”

a few

“Other Important Terms”

including . . .

- 1. ethnocentrism**
- 2. cultural relativism**
 - absolute cultural relativism**
 - critical cultural relativism**
- 3. “multiple cultural worlds”**

a few

“Other Important Terms”

including . . .

1. ethnocentrism

more on this later . . .

- absolute cultural relativism
- critical cultural relativism

3. “multiple cultural worlds”

and
“Units of Analysis”

“units of analysis” may include:

- one person**
- the family**
- the community**
- a region**
- a “culture area”**
- a culture / “subculture”**
- a nation**
- an item or action itself**
- a “cultural metaphor”**

“units of analysis” may include:

- one person**
- the family**
- the community**
- a region**

more on this later . . .

- a culture / “subculture”**
- a nation**
- an item or action itself**
- a “cultural metaphor”**

and we'll have a brief look at

Three Major Perennial Debates

three major contemporary debates

1. *Biological Determinism*

vs. Cultural Constructionism

2. *Ideationism vs. Cultural Materialism*

3. *Individual Agency vs. Structuralism*

(“free will” vs. “power structures”)

three major contemporary debates

1. *Biological Determinism*

vs. Cultural Constructionism

2. *Ideationism vs. Cultural Materialism*

more on this later . . .

3. *Individual Agency vs. Structuralism*

(“free will” vs. “power structures”)

**and so, to study Prehistoric
Cultures in the American
Anthropological tradition we'll
further consider the items you see
listed in the
Week 1 “Topics” . . .**

Week 1 — Introduction / Orientation

Reminder: All initial introductions should be done by the end of week one. You may reply to each others introductions throughout the course

Please read the [course overview](#) and go through the general course information in the first block.

And if you have not used Moodle before please view the [orientation tutorial](#).

(PLEASE NOTE: The orientation tutorial is a UM Technology Training Center tutorial. The content of the tutorial has nothing to do with this course. -- Tim Roufs)



CE Week 1 Welcome Memo

First-Day Handout

-  [Viewing .PDFs and PowerPoints](#)
-  [Topics for Week 1](#)



-  [Reading Assignment of Week 1](#)

Week 1 Activities

topics . . .

-  [Complete or Update Your Moodle Profile as Part of Your Introduction](#)
-  [Information on Points for Forum Posts](#)
-  [Pre Assessing Yourself \(Due by Friday, 14 September 2012\)](#)
-  [Forum: Archaeological Ethics \(Due by Friday, 14 September 2012\)](#)

Week 1 — Introduction to Anthropology

Orientation to Prehistoric Cultures



CE Week 1 Memo

First-Day Handout

(syllabus)

Meet Your Professor

(WebPage)

slides: (.pdf) (.pptx)

(Download PowerPoint Viewer Free)

[see note on slide formats]

Introduction

slides: (.pdf) (.pptx)

(Download PowerPoint Viewer Free)

[see note on slide formats]

handout: [Anthropology and Its Parts](#)

~

Orientation

slides: (.pdf) (.pptx)

(Download PowerPoint Viewer Free)

[see note on slide formats]

~

- **Main Characteristics of Anthropology**

slides: (.pdf) (.pptx)

- **Main Characteristics of Anthropology**

slides: (.pdf) (.pptx)

(Download PowerPoint Viewer Free) (Download Adobe .pdf Reader Free)

[see note on slide formats]

(NOTE: This is a long slide set as it covers some very important background information that will be referred to often as we go through the semester. Please bear with it to the end. And it will take a little longer to load, so please bear with that also. There is no video presentation scheduled for this and next week as the base slide sets tend to be a little longer than "normal.")

- the **four fields** of general anthropology
- **culture** as a primary concept
- **comparative method** as major approach
- **holism** as a primary theoretical goal
- **fieldwork** as a primary research technique

WebPage Summary

"Anthropology and . . . It's Parts" chart

- **"Other Important Terms"**

slides: (.pdf) (.pptx)

(Download PowerPoint Viewer Free) (Download Adobe .pdf Reader Free)

[see note on slide formats]

- **Units of Analysis**

slides: (.pdf) (.pptx)

(Download PowerPoint Viewer Free) (Download Adobe .pdf Reader Free)

[see note on slide formats]

- **Three Major Perennial Debates**

slides: (.pdf) (.pptx)

(Download PowerPoint Viewer Free) (Download Adobe .pdf Reader Free)

[see note on slide formats] (NOTE: This is a long slide set as it covers more than 2000+ years. Please bear with it to the end. Please bear with it to the end. And it will take a little longer to load, so please bear with that also. There is no video presentation scheduled for this and next week as the base slide sets tend to be a little longer than "normal.")

**we'll go there and continue our
explorations . . .**



ANTH 1601 Freshman Seminar: Prehistoric Cultures (sec 001) Fall 2012, Duluth

moodle2

Home ► My courses ► ANTH1601_001F12D

Messages

No messages waiting
[Messages](#)

Online users

(last 5 minutes)

Tim Roufs

Search forums

[Advanced search](#)

Quick links for students

[Watch online orientation](#)

[User guides](#)

[Student support forums](#)

Email:
moodle@umn.edu

Calendar

August 2012

Sun	Mon	Tue	Wed	Thu	Fri	Sat
			1	2	3	4
5	6	7	8	9	10	11
12	13	14	15	16	17	18
19	20	21	22	23	24	25
26	27	28	29	30	31	

Events key

Global Course

Subject Index: [A](#) [B](#) [C](#) [D](#) [E](#) [F](#) [G](#) [H](#) [I](#) [J](#) [K](#) [L](#) [M](#) [N](#) [O](#) [P](#) [Q](#) [R](#) [S](#) [T](#) [U](#) [V](#) [W](#) [X](#) [Y](#) [Z](#)

Please do not copy/paste text directly from Microsoft Word. See explanation here
Use Notepad with Windows and TextEdit with Macs

Moodle "Block 1" DAY

Tim Roufs

Please get acquainted with the course site; review the course information materials and other links.
If you have not used Moodle course management system before, please view the Orientation tutorial.



Section links

1 2 3 4 5 6 7 8 9 10 11 12
13 14 15 16

Course Resources

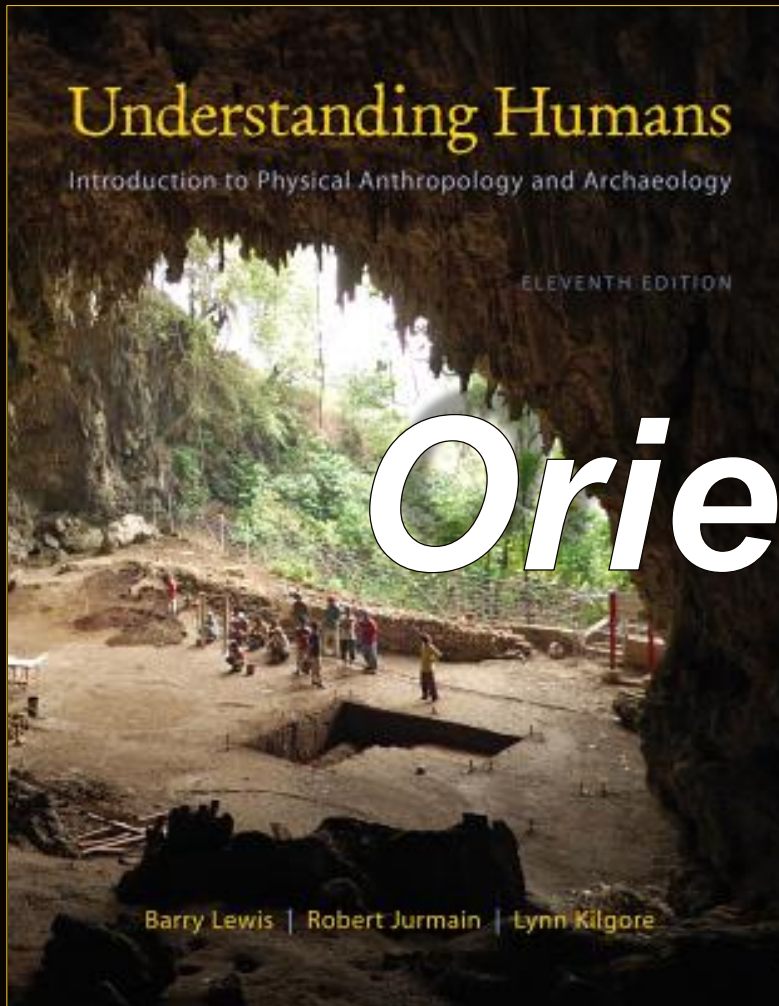
- [Video Schedule](#)
- [Class Slides \(PowerPoints\)](#)
- [Participation Guidelines](#)
- [Technology Requirements](#)
- [On-line Study Tips](#)
- [Accessibility Support](#)
- [Library](#)
- [Food of Countries/Cultures](#)
- [UMD Workshops](#)

Latest news

[Add a new topic...](#)
(No news has been posted yet)

Additional Learner Support Resources

- [Course Slides Information](#)
- [Student Support Services](#)
- [Online Study Tips](#)
- [Glossary of Terms](#)
- [Class slides](#)
- [Helens "How to" Guides](#)



Oriented



University of Minnesota Duluth
Tim Roufs
© 2010-2013

Our first “field trip” . . .

video:

Yanomamö: A Multidisciplinary Study

(45 min., 1970, VC 1290, F2520.1.Y3 Y36 2004 DVD)

Controversy: *Darkness in El Dorado*

film [HomePage](#)
[course viewing guide](#)



YANOMAMÖ INTERACTIVE CD/ROM
(Peter Biella, Napoleon A. Chagnon and Gary Seaman)

Our first “field trip”



Data courtesy of the World Language Mapping System

