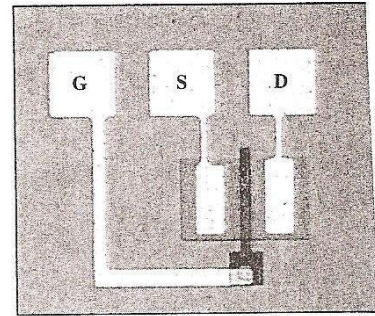
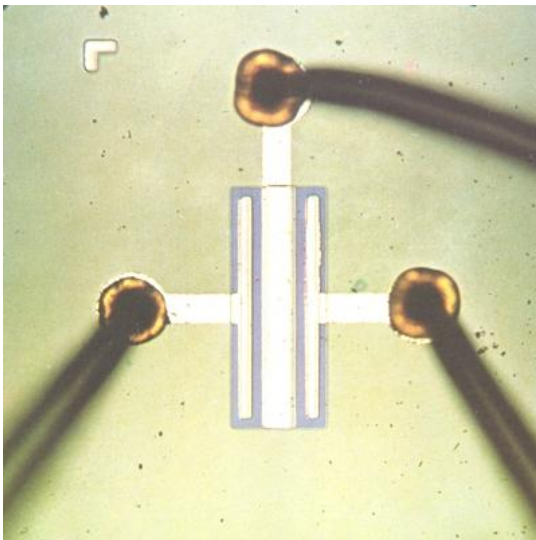
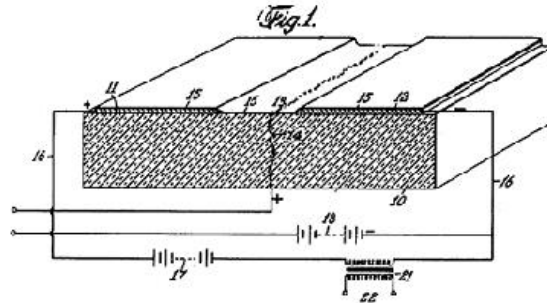


Drawing from Lillianfeld Patent [1]

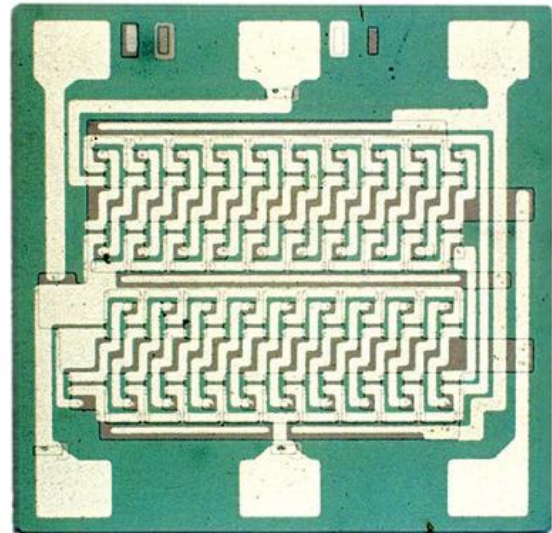


Top View of a Simple MOSFET

Jan. 28, 1930. J. E. LILLIENFELD 1,745,175
METHOD AND APPARATUS FOR CONTROLLING ELECTRIC CURRENTS
Filed Oct. 8, 1926



FET Circa 1964-Commercial Introduction



First FET IC Circa 1964 By RCA